

CABINET VISION

Richelieu Drawer System



AXIAL is perfectly suited for all your woodworking projects

You can click on any of the pages or topics below to 'zoom' to that page or topic.

Contents

Introduction	3
Installation Notes	4
Network Installation	4
General Notes	4
Package Contents	6
Importing	7
Materials	12
Material Schedules	13
How to Use Drawer & Rollout Construction in Job Properties	15
How to Use Drawer Guide Schedule for Guides in Job Properties	16
How to Use Drawer Box Material Schedule in Job Properties	16
How to Use in Existing Jobs	17
Components added into the KIT	18
User created standards	19
Overview of Materials included in this Package	20

Introduction

Thank you for downloading the **Richelieu AXIAL Drawer System** Package. This drawer system includes 84mm, 116mm, 167mm & 199mm heights, in the color White.

If you did not receive this package from the CABINET VISION eSupport website (<http://esupport.verosoftware.com/>) then the contents of this package may not be correct or functional. Only install CABINET VISION Setup Packages from a trusted source.

This package is compatible only with CABINET VISION version 2021 (or higher) and will not work with any previous versions.

If you require customization of this package or any of its contents, please contact Professional Services via cabinetvision.com (<http://www.cabinetvision.com/p2/customprogramming>).

If you need additional assistance with this package please use our 24 hour online resource at (<http://esupport.verosoftware.com/>).

The following instructions will help you to import and use this package in CABINET VISION.

Thank you and enjoy!

Installation Notes

- It is strongly recommended that you create a backup of your current database prior to importing this package. The Backup and Transferring Standards topics in the CABINET VISION help file have more information on this.
- This package is NOT intended for versions prior to CABINET VISION version 2021.

Network Installation

If installing this package on a network which includes a Network Installation of CABINET VISION then please follow these steps:

- The package is best installed at the server.*
- All users must be logged out of CABINET VISION. See the Status tab of the Network Administrator to Lock Out All Users.
- After the package has been installed, run Update Version and Unlock Users.

* If the server is unavailable then the package can be installed at a workstation but the rest of the steps must be followed.

General Notes

- This package was created using British standards and can be used in either British or Millimeters.
- Values used in this package can be changed to reflect the sizes used in your shop.
- Please report any problems with this package on the CV forum on eSupport.
- Newer or updated versions of this package can be found at the CV Partner Catalogs area: (http://esupport.verosoftware.com/cabinet_vision/m/cv_partner_catalogs)
- The contents of this package can be freely modified to suit your needs, however if it fails to function correctly after modification then you can resolve this by doing one of the following:
 - Re-import the original package and allow it to overwrite existing items.
 - Seek assistance on our 24 hour online resource (<http://esupport.verosoftware.com/>)
 - Contact Professional Services (<http://www.cabinetvision.com/p2/customprogramming>)

Product Overview



Height		Length	White
84 mm		300 mm (12")	AXL8430030
		350 mm (14")	AXL8435030
		400 mm (16")	AXL8440030
		450 mm (18")	AXL8445030
		500 mm (20")	AXL8450030
		550 mm (22")	AXL8455030
116 mm		300 mm (12")	AXL11630030
		350 mm (14")	AXL11635030
		400 mm (16")	AXL11640030
		450 mm (18")	AXL11645030
		500 mm (20")	AXL11650030
		550 mm (22")	AXL11655030
167 mm		300 mm (12")	AXL16730030
		350 mm (14")	AXL16735030
		400 mm (16")	AXL16740030
		450 mm (18")	AXL16745030
		500 mm (20")	AXL16750030
		550 mm (22")	AXL16755030
199 mm		300 mm (12")	AXL19930030
		350 mm (14")	AXL19935030
		400 mm (16")	AXL19940030
		450 mm (18")	AXL19945030
		500 mm (20")	AXL19950030
		550 mm (22")	AXL19955030

Package Contents

This package contains the following items:

- Complete selection materials for **Richelieu AXIAL Drawer System** in white Only:
 - AXIAL White**
 - AXIAL White w/Gallery Rail**

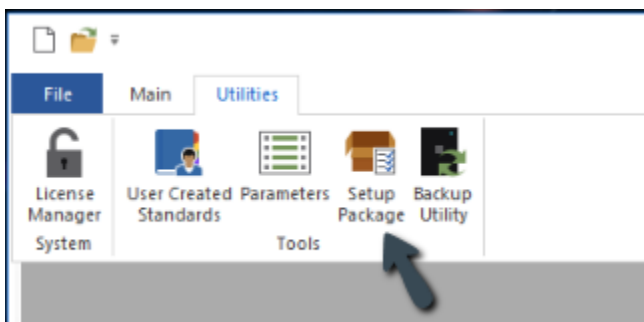
- One Sample Drawer Box Construction Methods: **DR AXIAL System**

- One Sample Rollout Construction Methods: **RO AXIAL System**

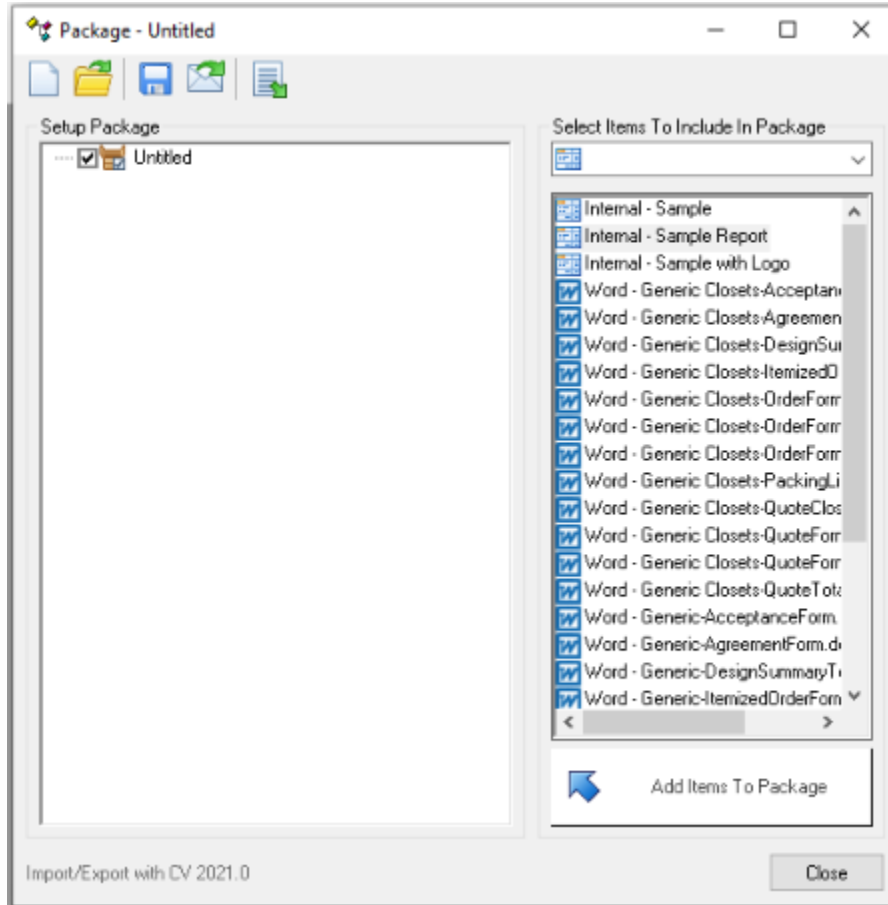
- Sample Drawer Guide Material Schedules for Drawer Guides:
 - AXIAL White**
 - AXIAL White w/Gallery Rail**



Importing

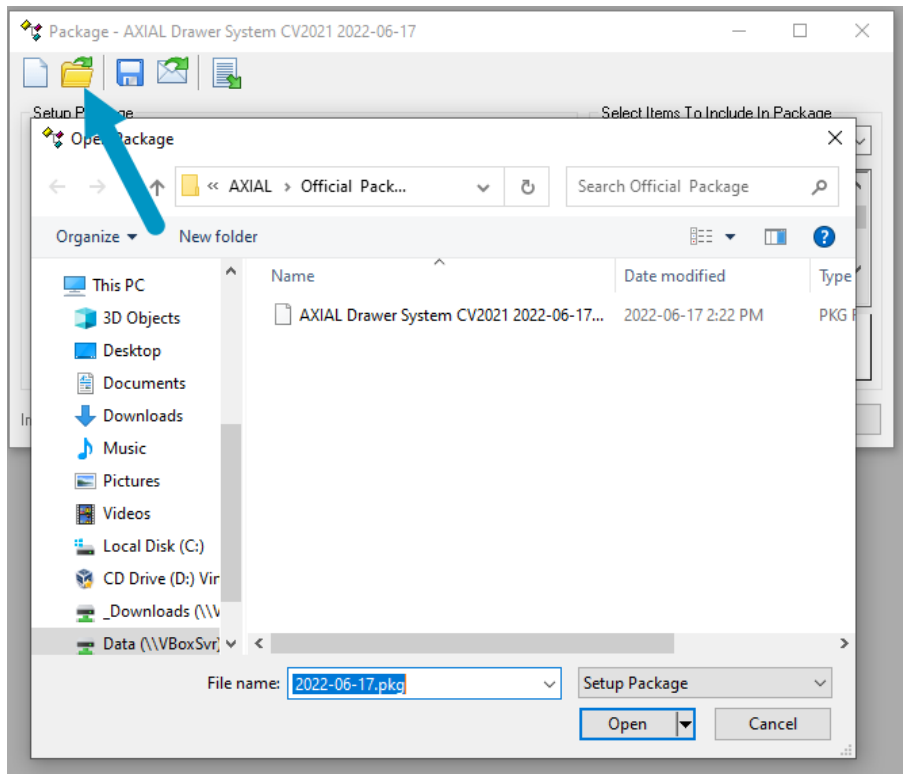
At the CABINET VISION splash screen, click the Utilities menu and then select 'Setup Package'



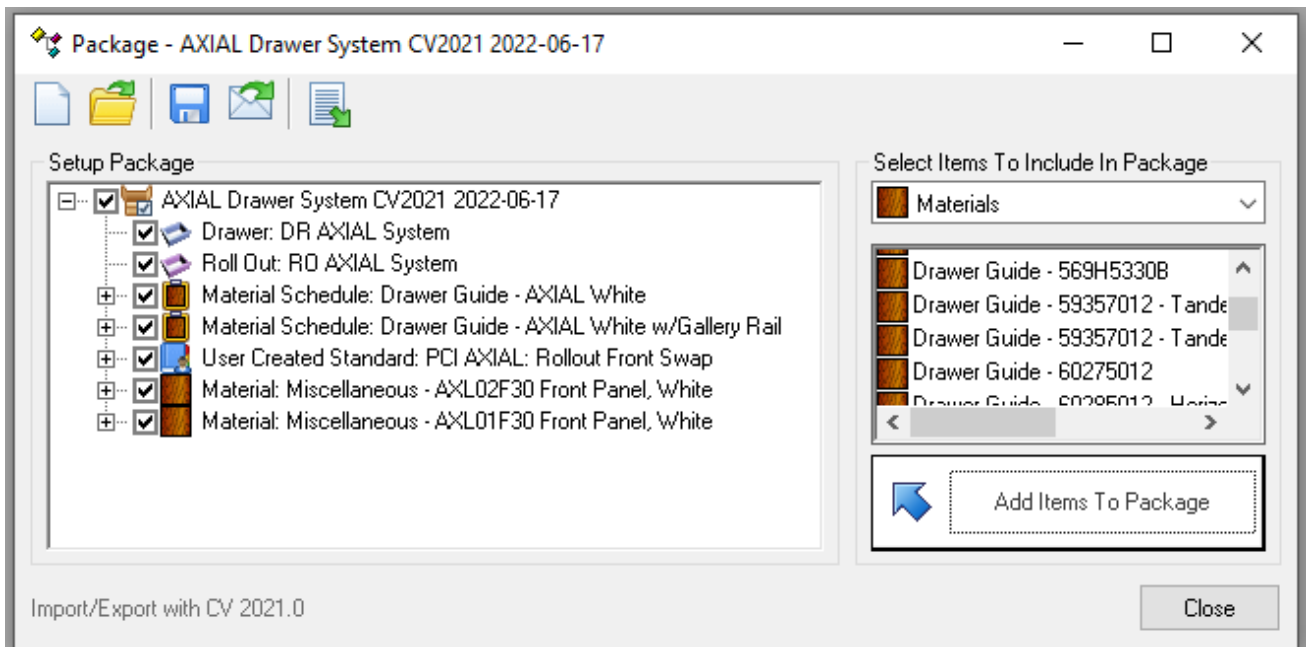
The 'Package' utility should then appear on your screen:



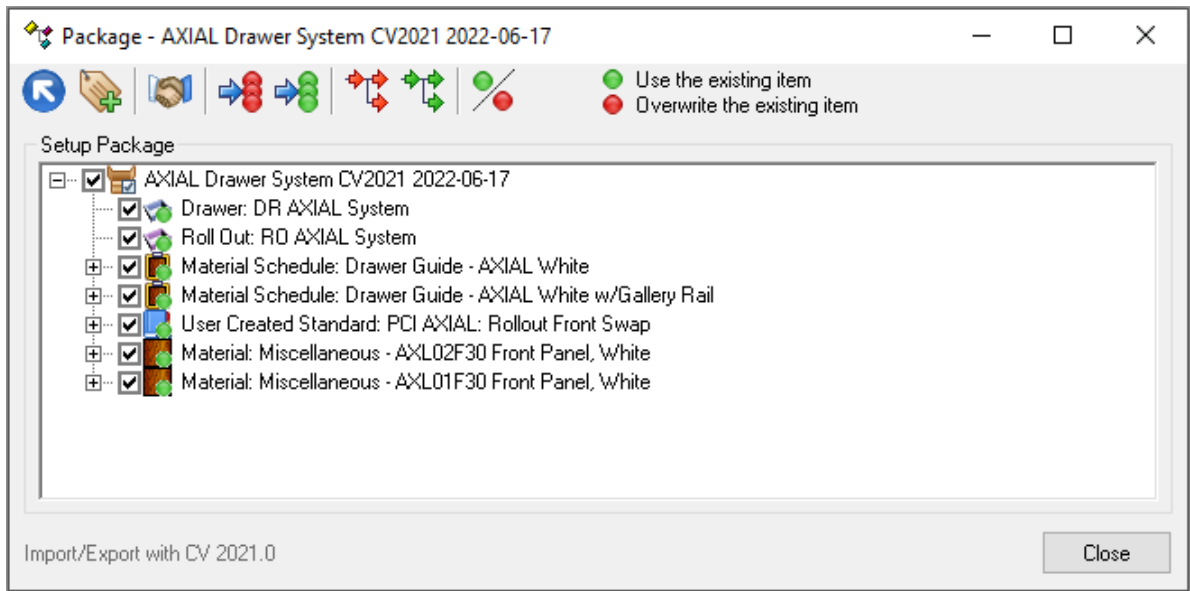
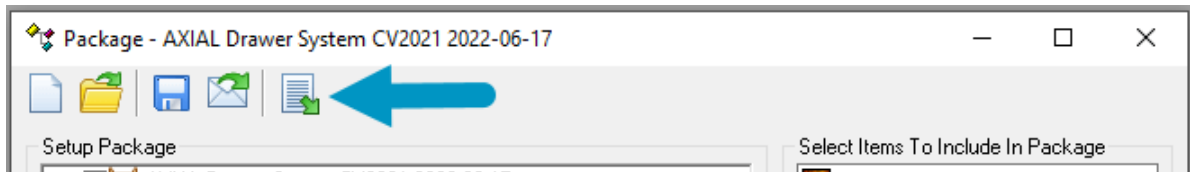
Click on the 'Open Existing Package' button  and the Open Package screen will appear. Locate the **Richelieu AXIAL Drawer System Package** , select it and then click 



The Package window should now display the contents of the **Richelieu AXIAL Drawer System Package** and should look like this:



Next, click the 'Swap Between Creation and Import Modes' button



Please note the following details:

NOTE: Unless otherwise specified it is recommended that this checkbox be checked for each item when importing this package.

This icon indicates that this item does not currently exist in your database and importing it will not have any effect on existing database objects.

This icon indicates that the item already exists in your database and the CV Package Utility will use that item instead of re-importing it.

This icon indicates that an existing item will be overwritten with the same item in this package.

Note: you must click on the or buttons to overwrite items in the package. See Import Options below for more details.

Important: *If you are installing an updated version of this package then you must select the 'Overwrite All' option*

Richelieu AXIAL Drawer System - Import Options

There are five options in the toolbar, which allow you to choose how to import a Setup Package.



Prefix The Item Names – If selected this options allows the user to assign a Prefix to each



Overwrite All Matches With Package Contents -Will overwrite all existing items in your database with the contents of the Package.



Use Existing Items For All Matches -Will use all the existing items in your database rather than overwrite them with the Package contents.



Overwrite Child Matches With Package Contents -Will overwrite all existing children of items in the Package that match those in your database.



Use Existing Items For Child Matches -Will use all the existing children in your database rather than overwrite them with the Package contents.



Turn On/Off Overwrite Mode -Allows you to overwrite existing items by selecting them individually. This will cause items in the Package to either overwrite the existing item or to use the existing item.

Materials

The **Richelieu AXIAL Drawer System** materials are located within the group labeled '**Richelieu AXIAL**' in the Material Manager.

Note the following details:

- You can change the Material Name to suit your needs but use the Description to indicate the part number
- This will appear on reports and can make ordering the Runners easier.
- Be sure to place a check in the 'Estimate' box if you want this material to be calculated in the Bid Center.
- The items are sorted in the format shown below for convenience; you can change this in any way that you like.

The screenshot shows the Material Manager application window. The interface includes a toolbar with icons for Return, New, Copy, Alias, Delete, Properties, Finish, Finish Type, Texture, and Vendor. A left-hand pane displays a hierarchical tree view of materials, with 'Drawer Guide' expanded to show 'Richelieu AXIAL' and its 'White' components (H199, H167, H116, H84). The main area contains a table of materials with the following columns: ID, Name, Material, Clearance, Guide, Finishes, Finish Types, Textures, Description, Type, Unit Of..., Default Vendor, Default Cost, Sell Price, and Default.

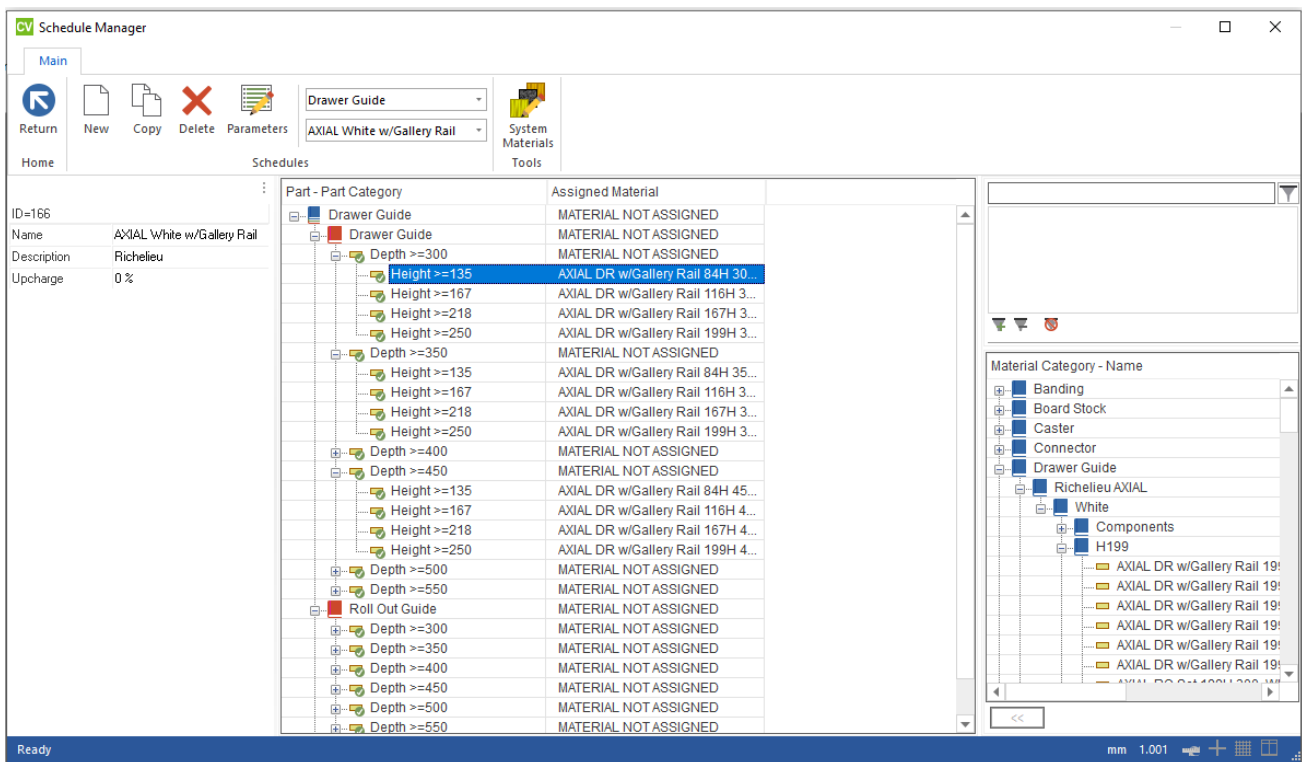
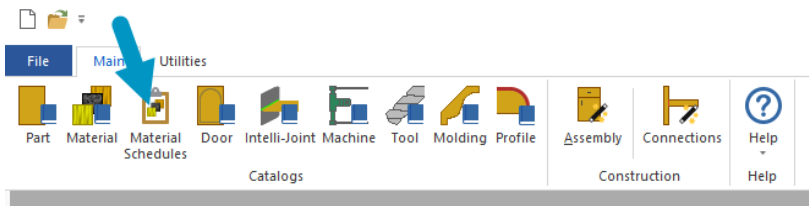
ID	Name	Material	Clearance	Guide	Finishes	Finish Types	Textures	Description	Type	Unit Of...	Default Vendor	Default Cost	Sell Price	Default
1718	AXL8430030 AXIAL 84H 300, White	AXL8430030, White						AXL8430030, White	Drawer Guide	Pair	Richelieu	0.00	0.00	0.000%
1720	AXL8435030 AXIAL 84H 350, White	AXL8435030, White						AXL8435030, White	Drawer Guide	Pair	Richelieu	0.00	0.00	0.000%
1721	AXL8440030 AXIAL 84H 400, White	AXL8440030, White						AXL8440030, White	Drawer Guide	Pair	Richelieu	0.00	0.00	0.000%
1722	AXL8445030 AXIAL 84H 450, White	AXL8445030, White						AXL8445030, White	Drawer Guide	Pair	Richelieu	0.00	0.00	0.000%
1723	AXL8450030 AXIAL 84H 500, White	AXL8450030, White						AXL8450030, White	Drawer Guide	Pair	Richelieu	0.00	0.00	0.000%
1724	AXL8455030 AXIAL 84H 550, White	AXL8455030, White						AXL8455030, White	Drawer Guide	Pair	Richelieu	0.00	0.00	0.000%
1750	AXIAL RO Set 84H 300, White	Inner Drawer 84H, White						Inner Drawer 84H, White	Drawer Guide	Pair	Richelieu	0.00	0.00	0.000%
1751	AXIAL RO Set 84H 350, White	Inner Drawer 84H, White						Inner Drawer 84H, White	Drawer Guide	Pair	Richelieu	0.00	0.00	0.000%
1752	AXIAL RO Set 84H 400, White	Inner Drawer 84H, White						Inner Drawer 84H, White	Drawer Guide	Pair	Richelieu	0.00	0.00	0.000%
1753	AXIAL RO Set 84H 450, White	Inner Drawer 84H, White						Inner Drawer 84H, White	Drawer Guide	Pair	Richelieu	0.00	0.00	0.000%
1754	AXIAL RO Set 84H 500, White	Inner Drawer 84H, White						Inner Drawer 84H, White	Drawer Guide	Pair	Richelieu	0.00	0.00	0.000%
1755	AXIAL RO Set 84H 550, White	Inner Drawer 84H, White						Inner Drawer 84H, White	Drawer Guide	Pair	Richelieu	0.00	0.00	0.000%
1775	AXIAL DR w/Gallery Rail 84H 300, White	84H Side Plus Gallery Rail, White						84H Side Plus Gallery Rail, White	Drawer Guide	Pair	Richelieu	0.00	0.00	0.000%
1776	AXIAL DR w/Gallery Rail 84H 350, White	84H Side Plus Gallery Rail, White						84H Side Plus Gallery Rail, White	Drawer Guide	Pair	Richelieu	0.00	0.00	0.000%
1777	AXIAL DR w/Gallery Rail 84H 400, White	84H Side Plus Gallery Rail, White						84H Side Plus Gallery Rail, White	Drawer Guide	Pair	Richelieu	0.00	0.00	0.000%
1778	AXIAL DR w/Gallery Rail 84H 450, White	84H Side Plus Gallery Rail, White						84H Side Plus Gallery Rail, White	Drawer Guide	Pair	Richelieu	0.00	0.00	0.000%
1779	AXIAL DR w/Gallery Rail 84H 500, White	84H Side Plus Gallery Rail, White						84H Side Plus Gallery Rail, White	Drawer Guide	Pair	Richelieu	0.00	0.00	0.000%
1780	AXIAL DR w/Gallery Rail 84H 550, White	84H Side Plus Gallery Rail, White						84H Side Plus Gallery Rail, White	Drawer Guide	Pair	Richelieu	0.00	0.00	0.000%

Material Schedules

Richelieu AXIAL Drawer System Guide Schedules were created with the following Heights and Lengths:

Guide Schedules		Lengths
AXIAL White	84, 116, 167, 199	300,350,400,450,500,550
AXIAL White w/Gallery Rail	135, 167, 218, 250	300,350,400,450,500,550

These are included as an example only, you can create your own schedules with required Drawer Depth.



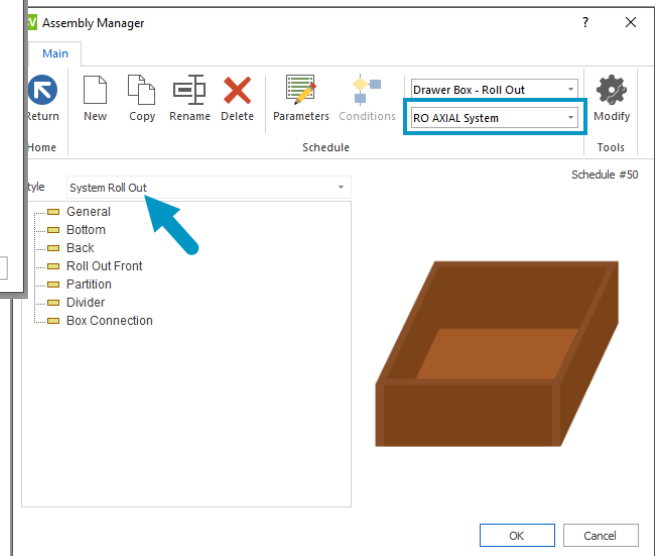
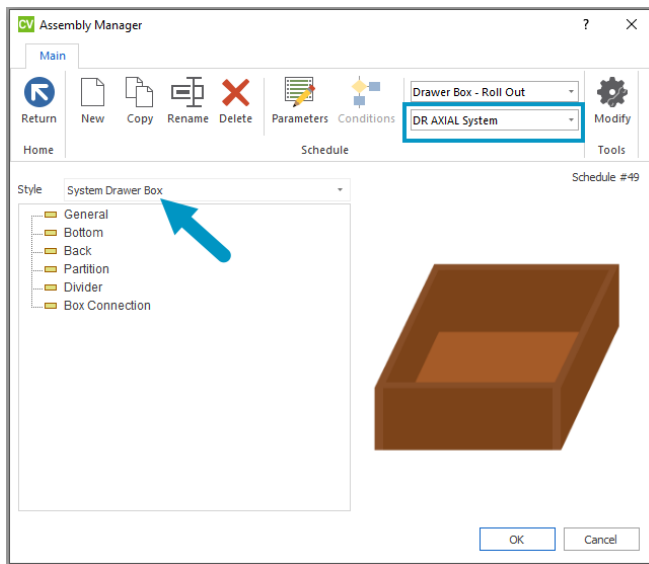
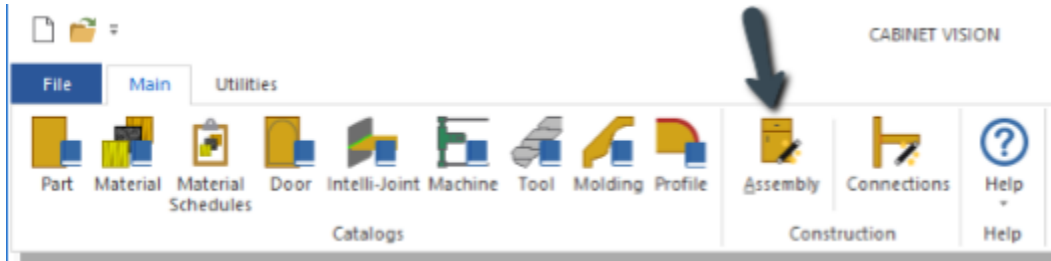
Richelieu AXIAL Drawer System - Drawer & Rollout Construction

Construction Includes all the parameters to build system drawers and Rollouts as per Richelieu documentation.

This is a sample only, you **MUST** setup the **Box Connections** as per your shop's specifications.

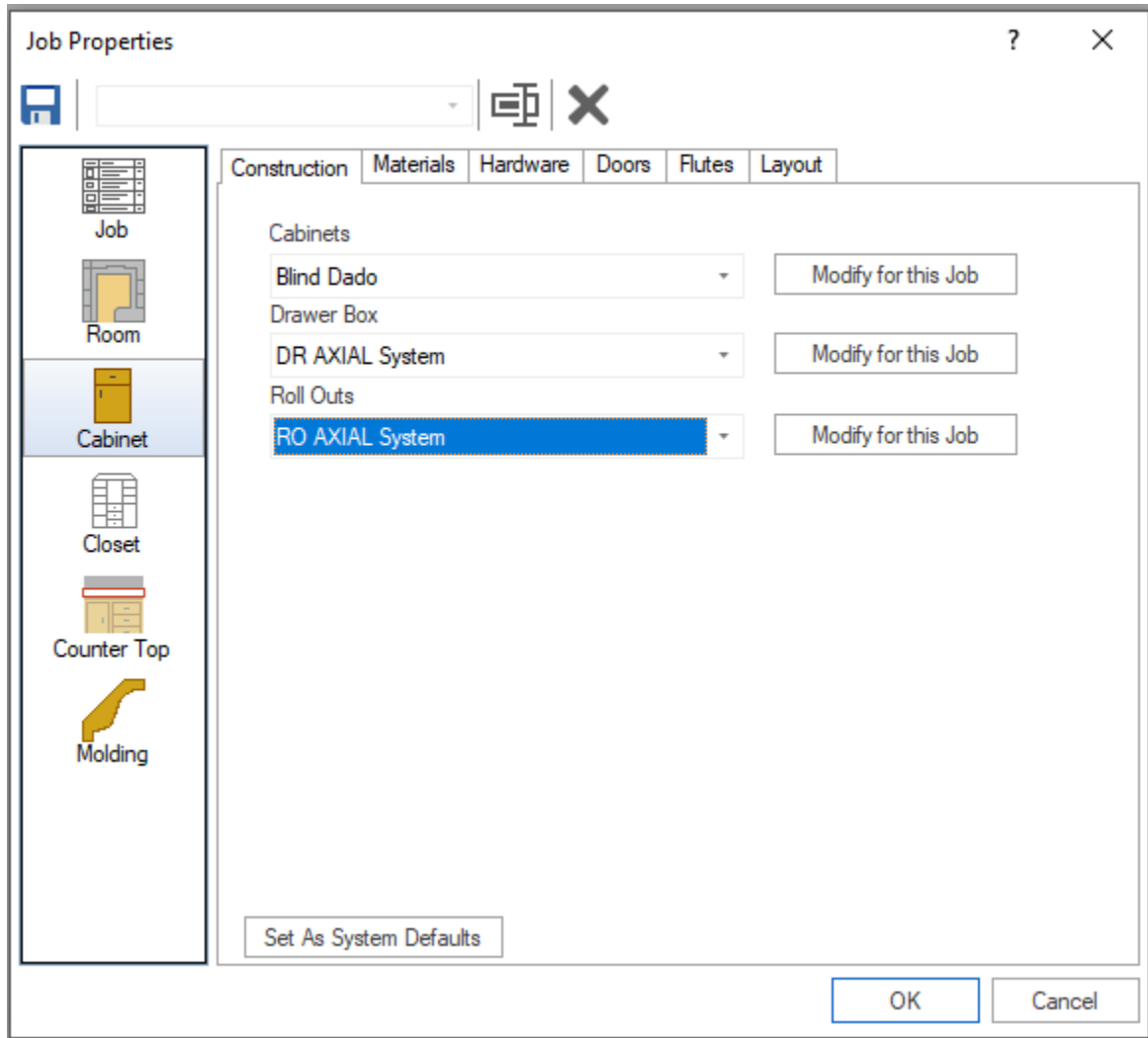
DR AXIAL System, RO AXIAL System constructions were created with **System Drawer Box & System Rollout Styles**.

AXIAL Drawer System constructions are suitable for all drawer material schedules.



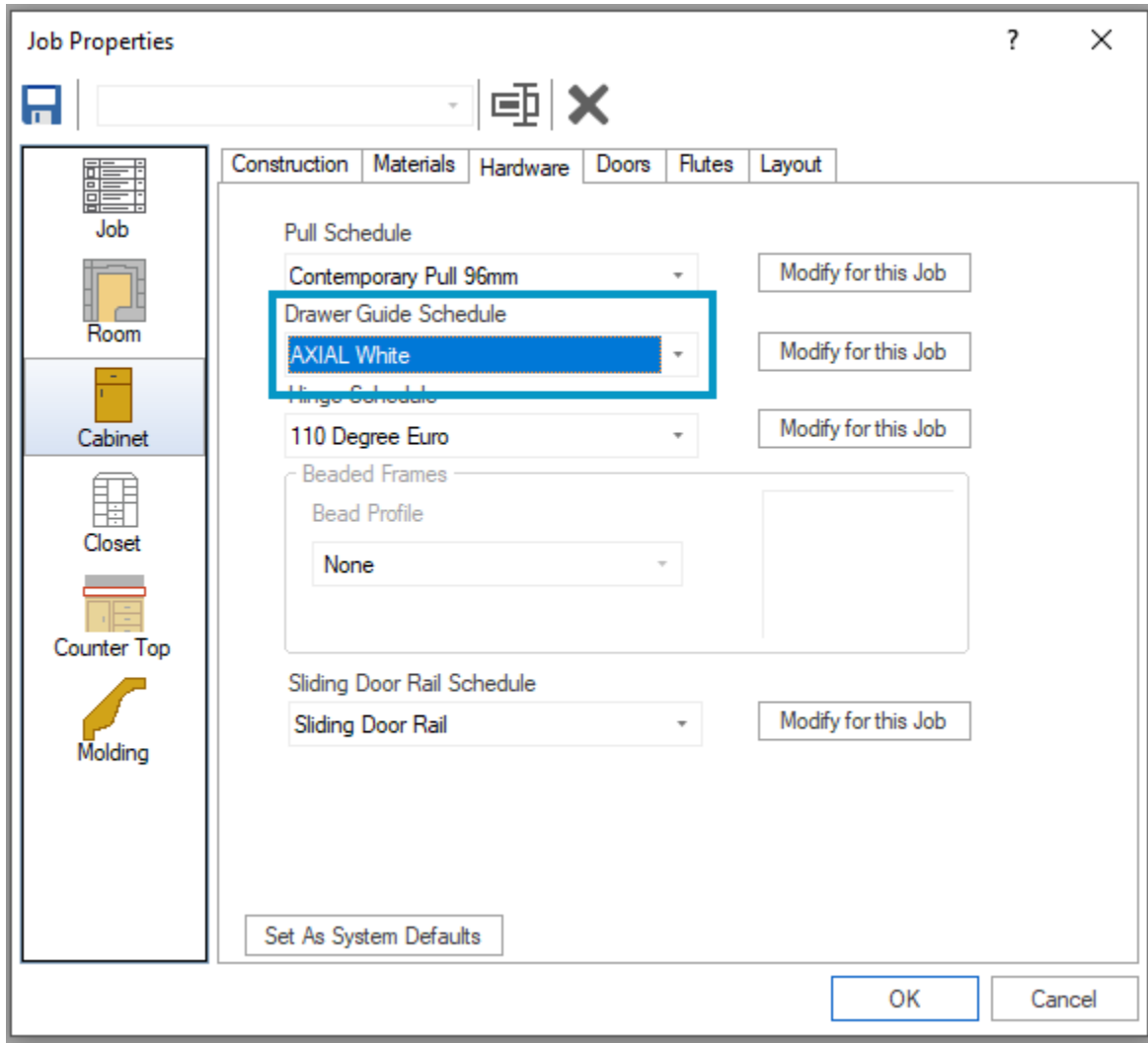
How to Use Drawer & Rollout Construction in Job Properties

The Drawer Box Construction is selected in Cabinet Properties at the Construction tab. As well as the Rollout Construction. These methods were created in the Assembly Manager.



How to Use Drawer Guide Schedule for Guides in Job Properties

The Drawer Guide Schedule is selected in Cabinet properties at the Hardware tab:

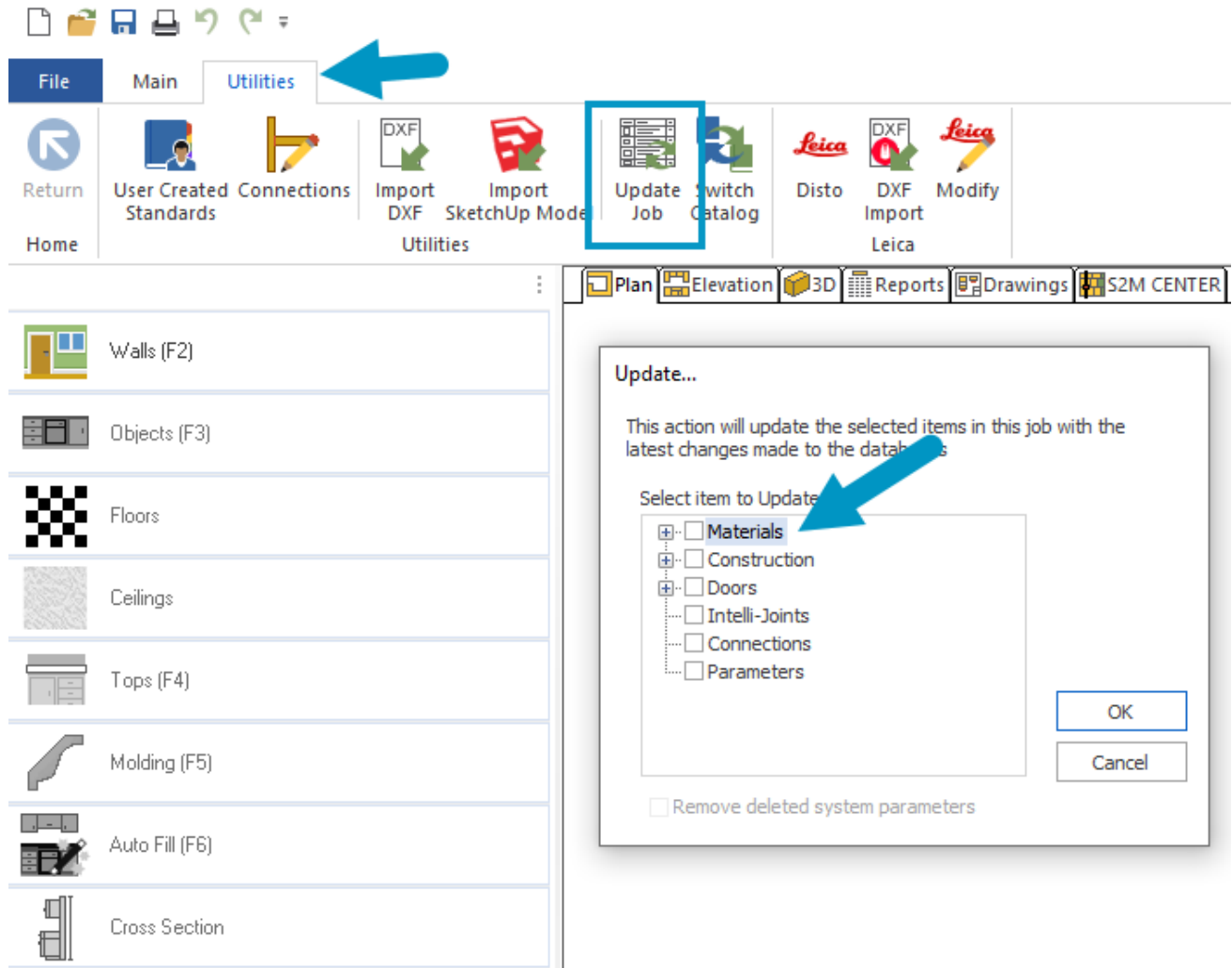


How to Use Drawer Box Material Schedule in Job Properties

There are **NO** box material schedules included in this package. You can use any existing drawer & rollout material schedules you already have in your system.

How to Use in Existing Jobs

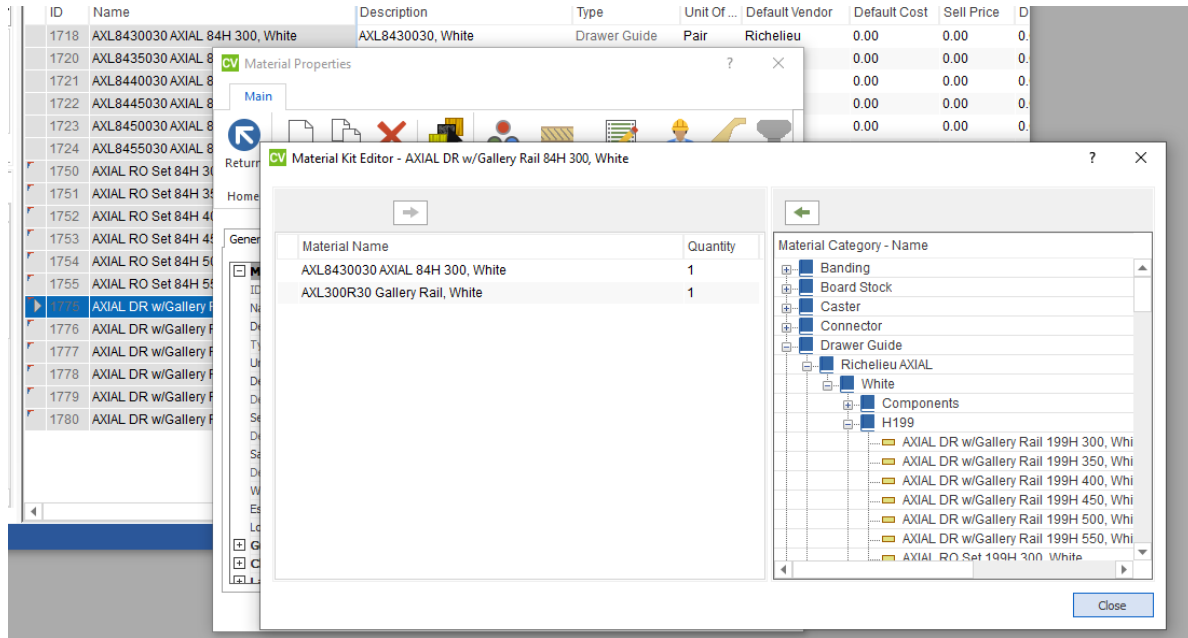
To use the **Richelieu AXIAL Drawer System** in an existing job you will need to go to Utilities – Update Job and select Update Materials.



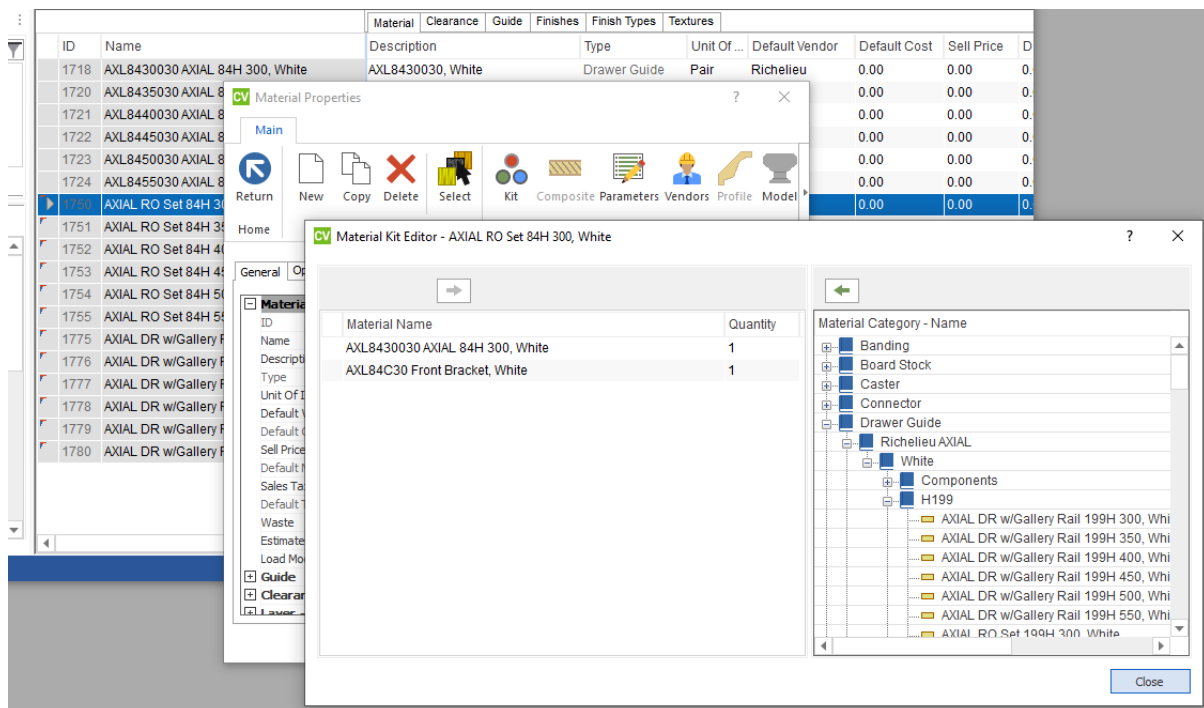
Components added into the KIT

The Rollout Guides and the Drawers with Gallery Rail have materials added to the Kit section.

The **AXIAL DR w/Gallery Rail** is made up of the original Drawer SKU plus the SKU for Gallery Rails:



The **AXIAL RO Set** is made up of the original Drawer SKU plus the SKU for the front bracket:



User created standards

This **Richelieu AXIAL Drawer System** requires 1 UCS's to swap out the rollout fronts:

26	PCIAXIAL: Rollout Front Swap	Richelieu AXIAL Hardware Package created by Planit Canada Inc.
----	------------------------------	--

If you add or change materials, you will need to update the material ID for each height.

If you add or change the rollout schedules, you will need to change the schedule ID.

Example:

```

10
11 ;XXXXXXXXXXXXXXXXXXXXXXXXXXXXXXXXXXXXXXXXXXXXXXXXXXXXXXXXXXXXXXXXXXXXXXXXXXXX
12 ;White
13 ;XXXXXXXXXXXXXXXXXXXXXXXXXXXXXXXXXXXXXXXXXXXXXXXXXXXXXXXXXXXXXXXXXXXXXXXXXXXX
14 If ROG._M:SCHEDID<int> = 164 or ROG._M:SCHEDID<int> = 166 Then
15
16     ;84H
17     ;Adds Front
18     If ROBOX.DY = 84mm THEN
19         DY = Cab.Interior.CO.DX - 100mm
20         DX = 110mm
21         DZ = 11mm
22         Y -= 41.7mm           ;Up/Down
23         Z += 4.875mm + 1.4mm ;In/Out
24         LibPart = 'Richelieu Hardware\AXIAL\AXIAL Front Panel 84'
25         MatID<int> = 1748     ;84/167/199 Front
26         _IAX<int> = 1
27         _FIN<int> = 430
28         _FINTYP<int> = 3
29     End If
30

```

It is recommended that you contact support if you are not familiar with editing UCS's.

Overview of Materials included in this Package

Model	Color	Name
H84	White	AXL8430030 AXIAL 84H 300, White
		AXL8435030 AXIAL 84H 350, White
		AXL8440030 AXIAL 84H 400, White
		AXL8445030 AXIAL 84H 450, White
		AXL8450030 AXIAL 84H 500, White
		AXL8455030 AXIAL 84H 550, White
H116	White	AXL11630030 AXIAL 116H 300, White
		AXL11635030 AXIAL 116H 350, White
		AXL11640030 AXIAL 116H 400, White
		AXL11645030 AXIAL 116H 450, White
		AXL11650030 AXIAL 116H 500, White
		AXL11655030 AXIAL 116H 550, White
H167	White	AXL16730030 AXIAL 167H 300, White
		AXL16735030 AXIAL 167H 350, White
		AXL16740030 AXIAL 167H 400, White
		AXL16745030 AXIAL 167H 450, White
		AXL16750030 AXIAL 167H 500, White
		AXL16755030 AXIAL 167H 550, White
H199	White	AXL19930030 AXIAL 199H 300, White
		AXL19935030 AXIAL 199H 350, White
		AXL19940030 AXIAL 199H 400, White
		AXL19945030 AXIAL 199H 450, White
		AXL19950030 AXIAL 199H 500, White
		AXL19955030 AXIAL 199H 550, White
Components		AXL84C30 Front Bracket, White
		AXL116C30 Front Bracket, White
		AXL167C30 Front Bracket, White
		AXL199C30 Front Bracket, White
		AXL00F30 Front Rail, White
		AXL01F30 Front Panel, White
		AXL02F30 Front Panel, White
		AXL300R30 Gallery Rail, White
		AXL350R30 Gallery Rail, White
		AXL400R30 Gallery Rail, White
		AXL450R30 Gallery Rail, White
		AXL500R30 Gallery Rail, White
		AXL550R30 Gallery Rail, White

CABINET VISION