

## Richelieu 908 Package for Cabinet Vision



## Table of Contents

Introduction .....	4
Installation Notes .....	5
Network Installation.....	5
General Notes .....	5
Importing the Richelieu 908 Package.....	6
How to import the Richelieu 908 Package in Cabinet Vision 2021 .....	6
How to import the Richelieu 908 Package in Cabinet Vision 2022 and Higher.....	14
Using the Richelieu 908 Package.....	20
New Jobs .....	20
Construction Tab Selections.....	21
Hardware Tab Selections .....	22
Existing Jobs .....	23
Update Job .....	23

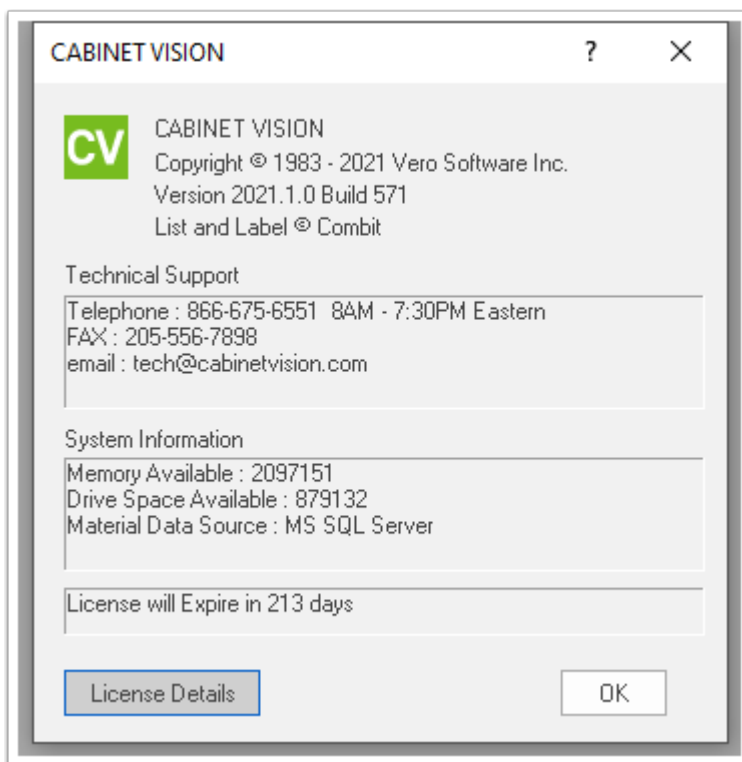
## Introduction

Thank you for downloading the Richelieu 908 Package. If you did not receive this package from the Planit Canada website (<https://planitcanada.ca/>) then the contents of this package may not be correct or functional. Only install Cabinet Vision Setup Packages from a trusted source.

This package is compatible only with Cabinet Vision version 2021.1 (or higher) and will not work with any previous versions.

If you require customization of this package or any of its contents, please contact Professional Services via [planitcanada.ca \(https://planitcanada.ca/training-support/request-support/\)](https://planitcanada.ca/training-support/request-support/).

The following instructions will help you to import and use this package in Cabinet Vision. Thank you and enjoy!



## Installation Notes

- It is strongly recommended that you create a backup of your current database prior to importing this package. The Backup and Transferring Standards topics in the Cabinet Vision help file have more information on this.
- This package is NOT intended for versions prior to Cabinet Vision version 2021.1.

## Network Installation

If installing this package on a network which includes a Network Installation of Cabinet Vision, then please follow these steps:

- The package is best installed at the server. \*
- All users must be logged out of Cabinet Vision. See the Status Tab of the Network Administrator to Lock Out All Users.
- After the package has been installed, run Update Version and Unlock Users.

\* If the server is unavailable then the package can be installed at a workstation, but the rest of the steps must be followed.

## General Notes

- This package was created using metric standards and can be used in either metric or inches.
- Values used in this package can be changed to reflect the sizes used in your shop.
- Please report any problems with this package to the Planit Canada Tech Support Team.
- Newer or updated versions of this package can be found at the Cabinet Vision Packages page: (<https://planitcanada.ca/solutions/cabinet-vision/tools-packages/>)
- The contents of this package can be freely modified to suit your needs, however if it fails to function correctly after modification then you can resolve this by doing one of the following:
  - Re-import the original package and allow it to overwrite existing items.
  - Contact the Tech Support Team (<https://planitcanada.ca/training-support/request-support/>)

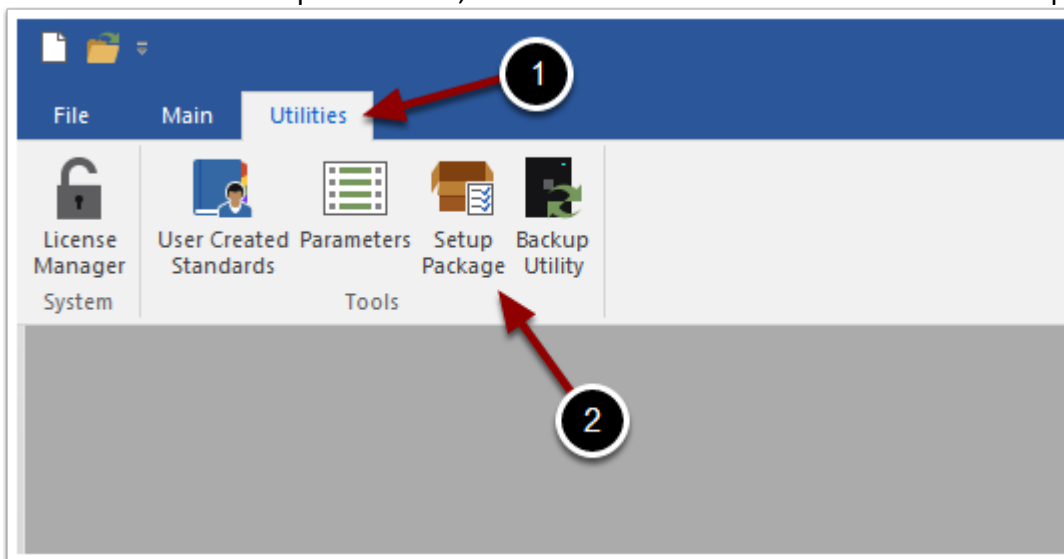
## Importing the Richelieu 908 Package

This package contains the following items:

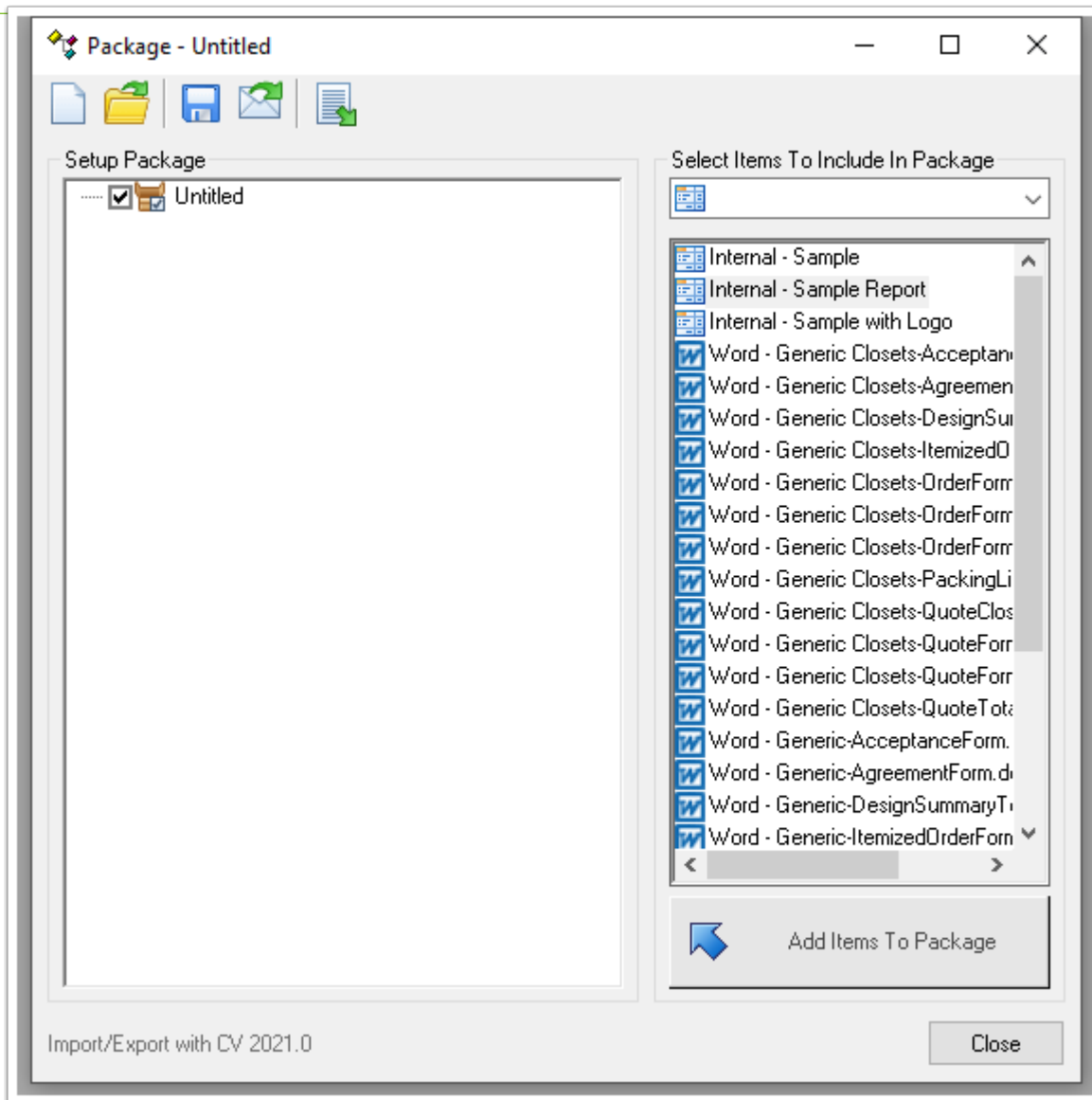
- One Drawer Box Construction and One Roll-Out Box Construction
  - DR Richelieu 908 Standard (Drawer Box Construction)
  - RO Richelieu 908 Standard (Roll-Out Box Construction)
- Four Drawer Guide Material Schedules
  - Richelieu 908 Gray – 1 Gallery Rod
  - Richelieu 908 Gray – 2 Gallery Rods
  - Richelieu 908 White – 1 Gallery Rod
  - Richelieu 908 White – 2 Gallery Rods
- One User Created Standard (PCI Richelieu 908 Rollout Front Swap)

## How to import the Richelieu 908 Package in Cabinet Vision 2021

At the Cabinet Vision splash screen, click the Utilities menu and then select 'Setup Package'.

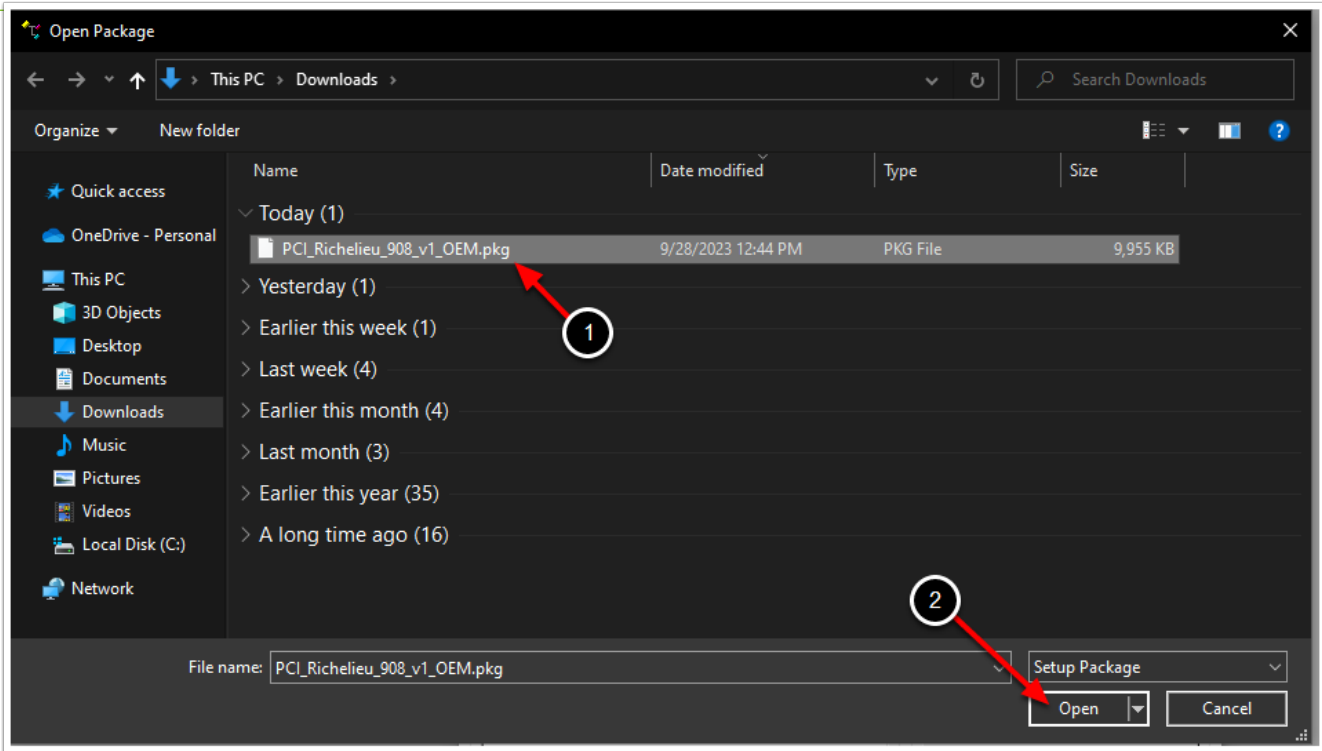


The 'Package' utility should then appear on your screen:

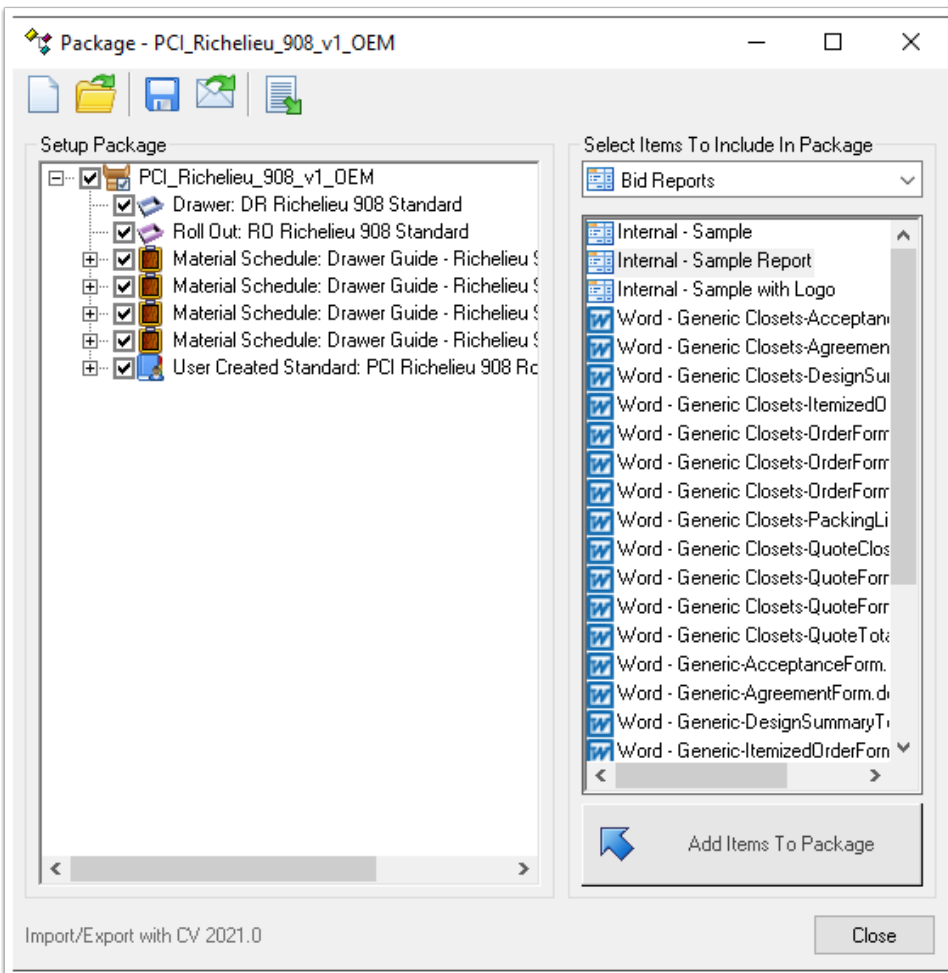


Click on the 'Open An Existing Package' button and the Open Package screen will appear.

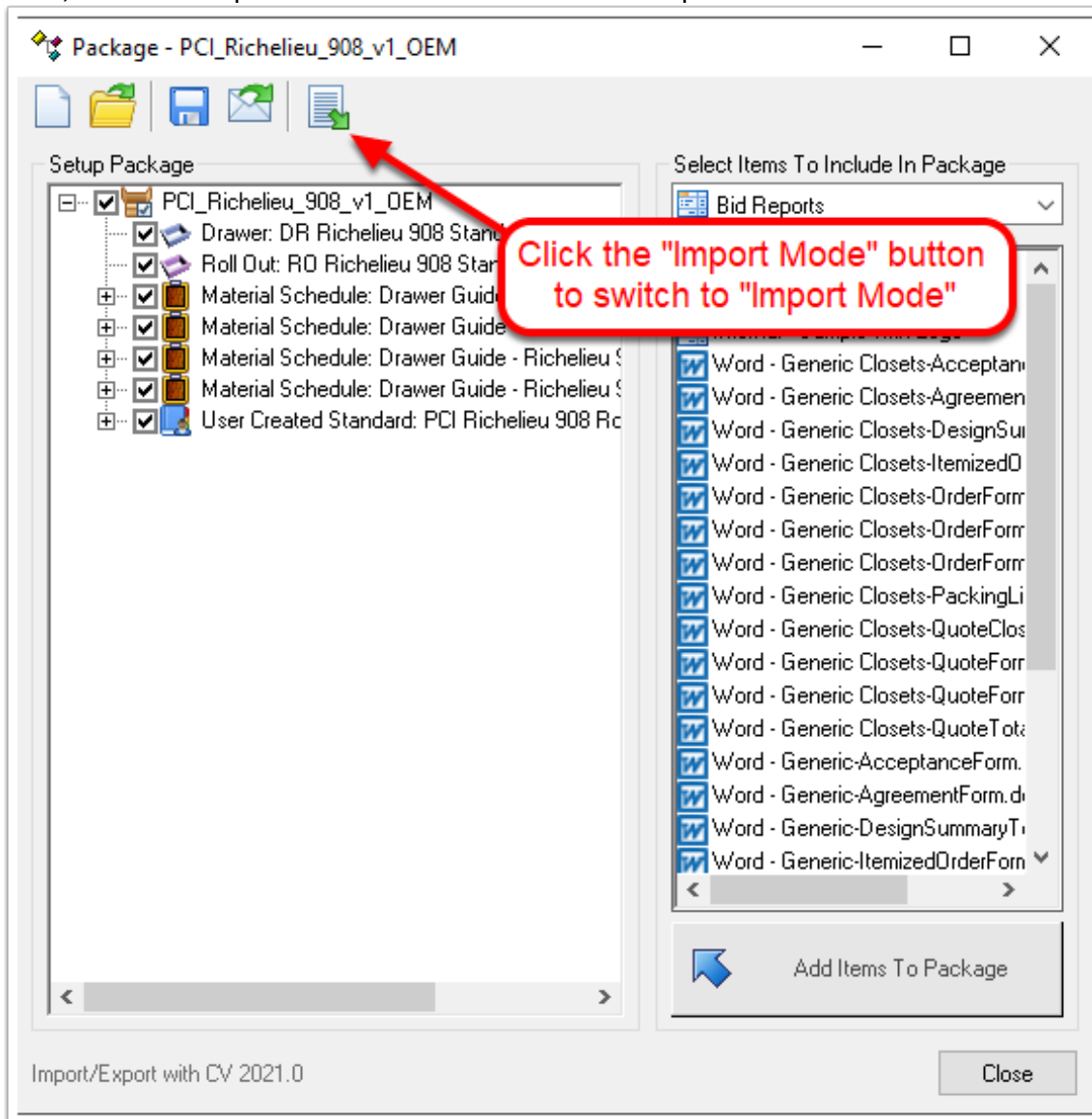




The Package window should now display the contents of the Richelieu 908 package and should look like this:




Next, click the "Import Mode" button to switch to "Import mode".




Please note the following details:


There are five options in the toolbar, which allow you to choose how to import a Setup Package.





 **Prefix The Item Names** – If selected this options allows the user to assign a Prefix to each item imported with this Package.

 **Overwrite All Matches With Package Contents** - Will overwrite all existing items in your database with the contents of the Package.

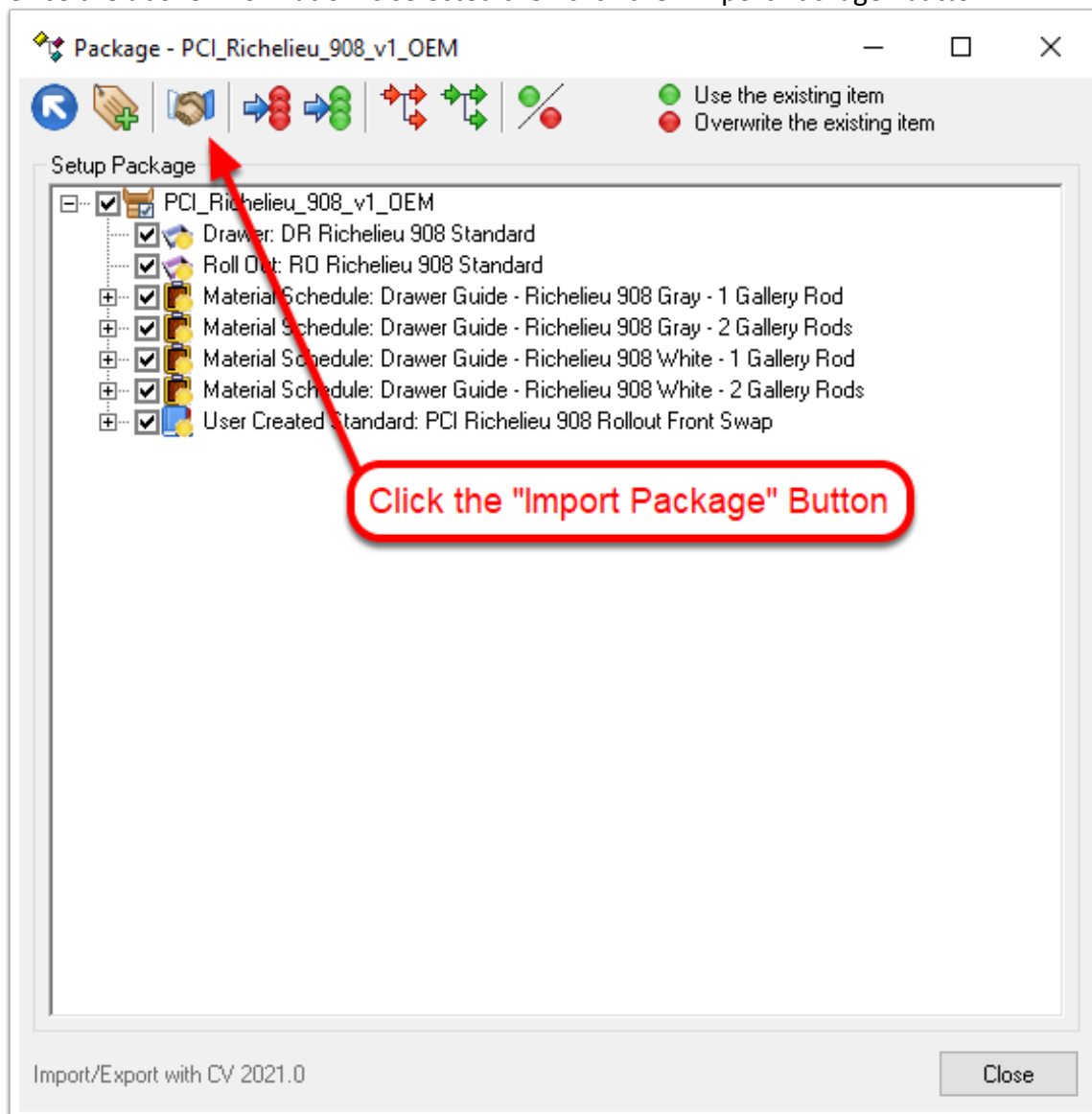
 **Use Existing Items For All Matches** - Will use all the existing items in your database rather than overwrite them with the Package contents.

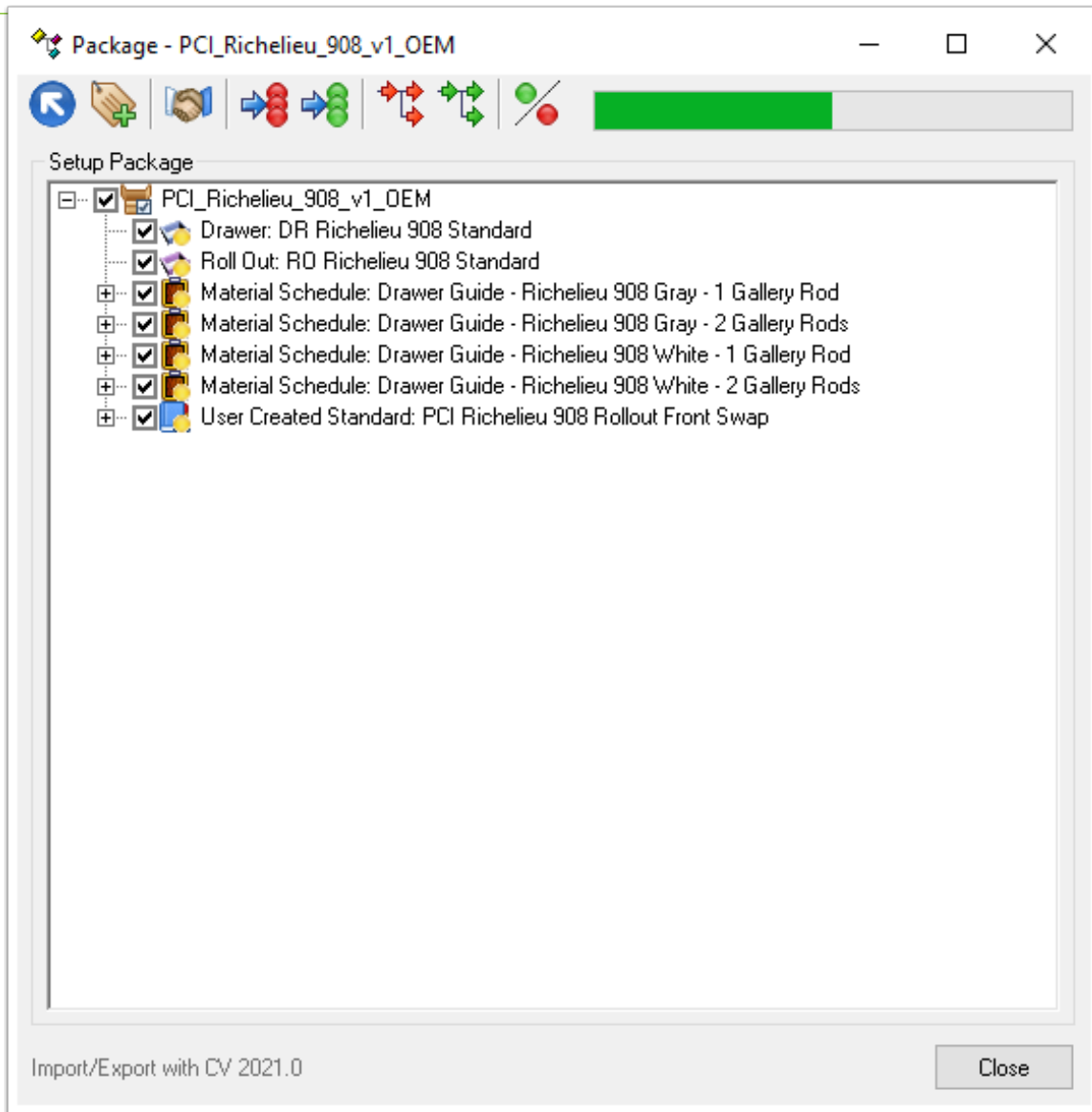
 **Overwrite Child Matches With Package Contents** - Will overwrite all existing children of items in the Package that match those in your database.

 **Use Existing Items For Child Matches** - Will use all the existing children in your database rather than overwrite them with the Package contents.

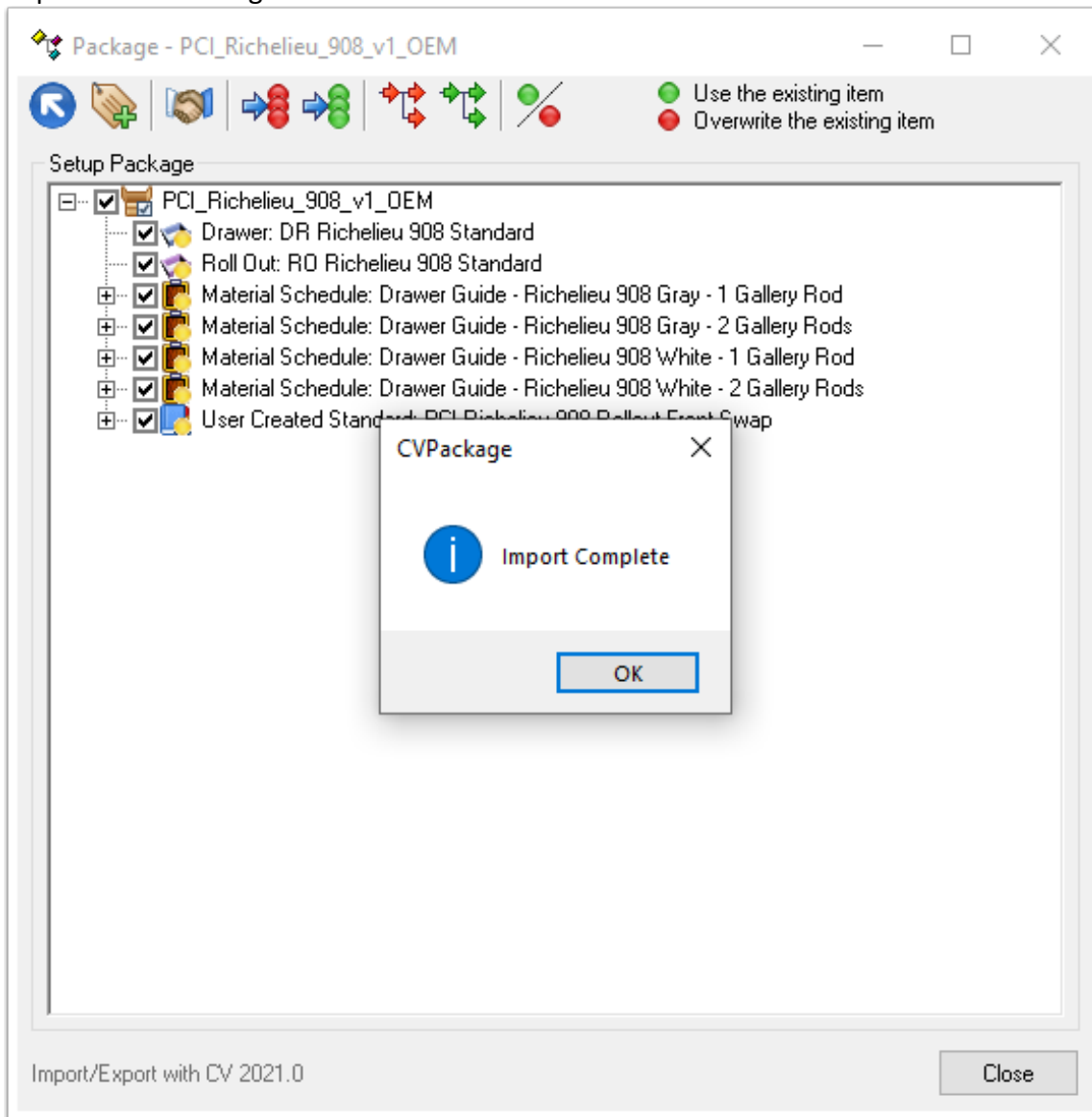
 **Turn On/Off Overwrite Mode** - Allows you to overwrite existing items by selecting them individually. This will cause items in the Package to either overwrite the existing item or to use the existing item

Once the above information is selected then click the “Import Package” button.



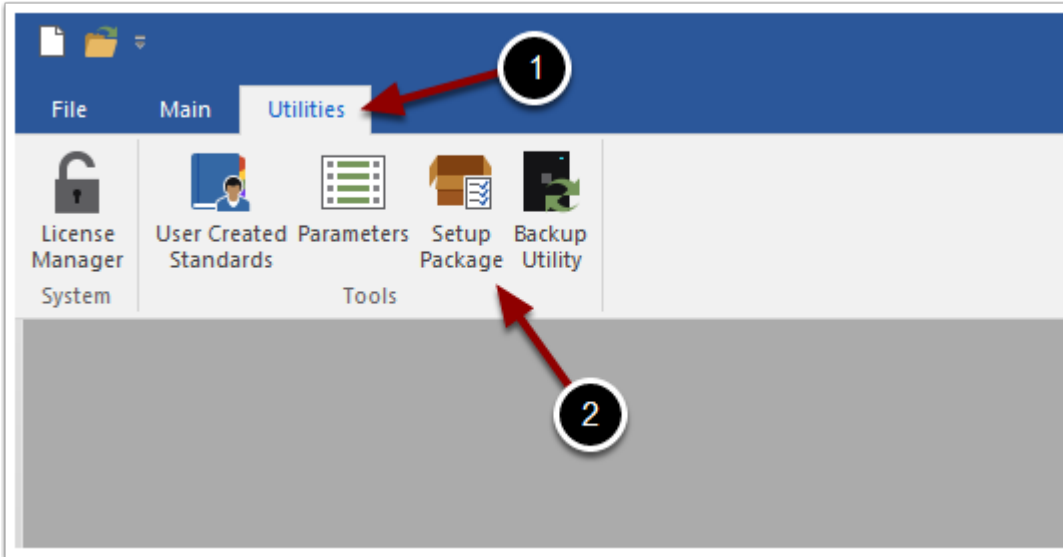


Once the package is imported you will be informed that you have successfully imported the Package into Cabinet Vision.

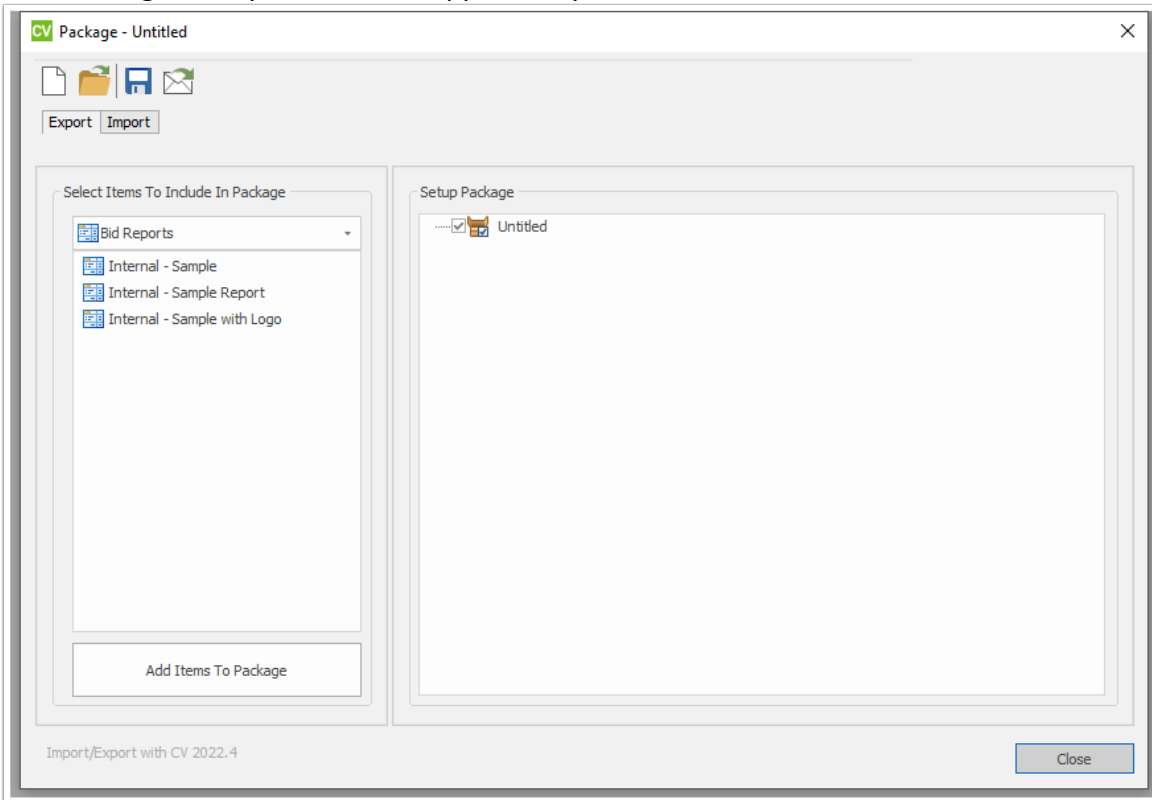


## How to import the Richelieu 908 Package in Cabinet Vision 2022 and Higher

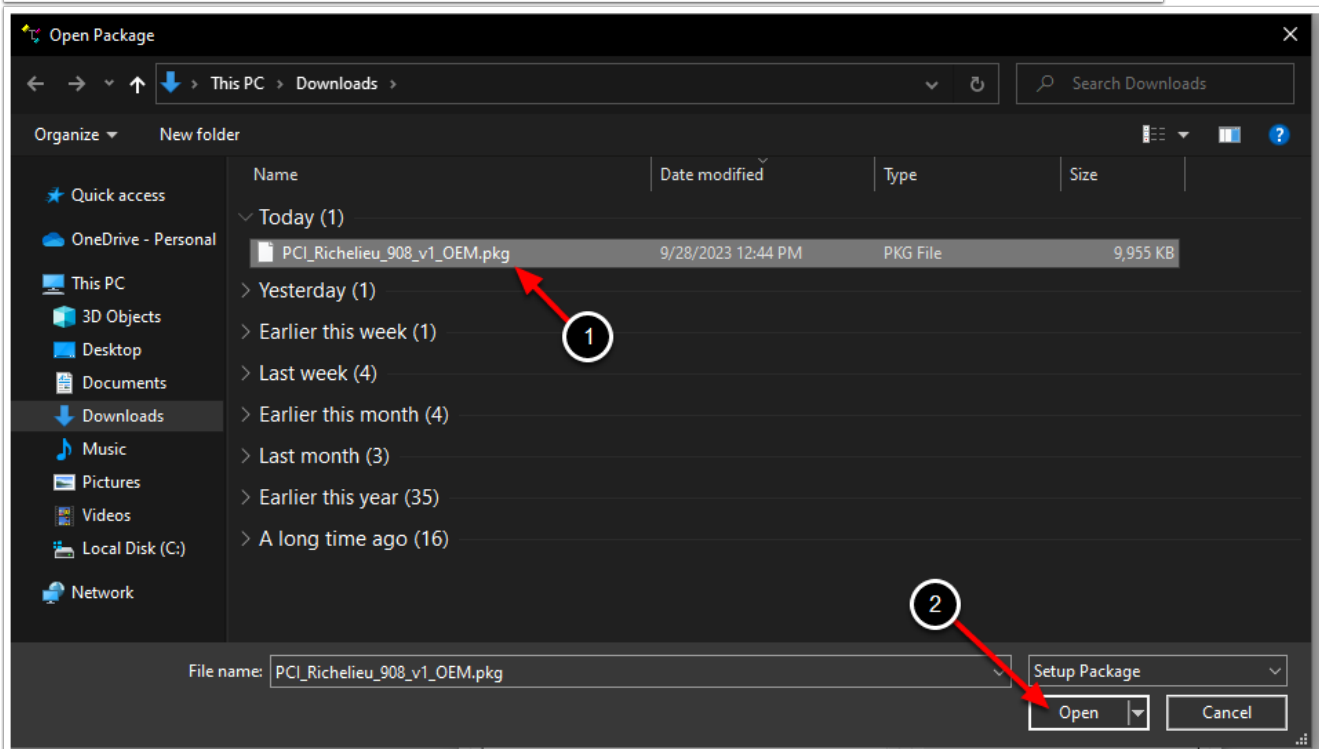
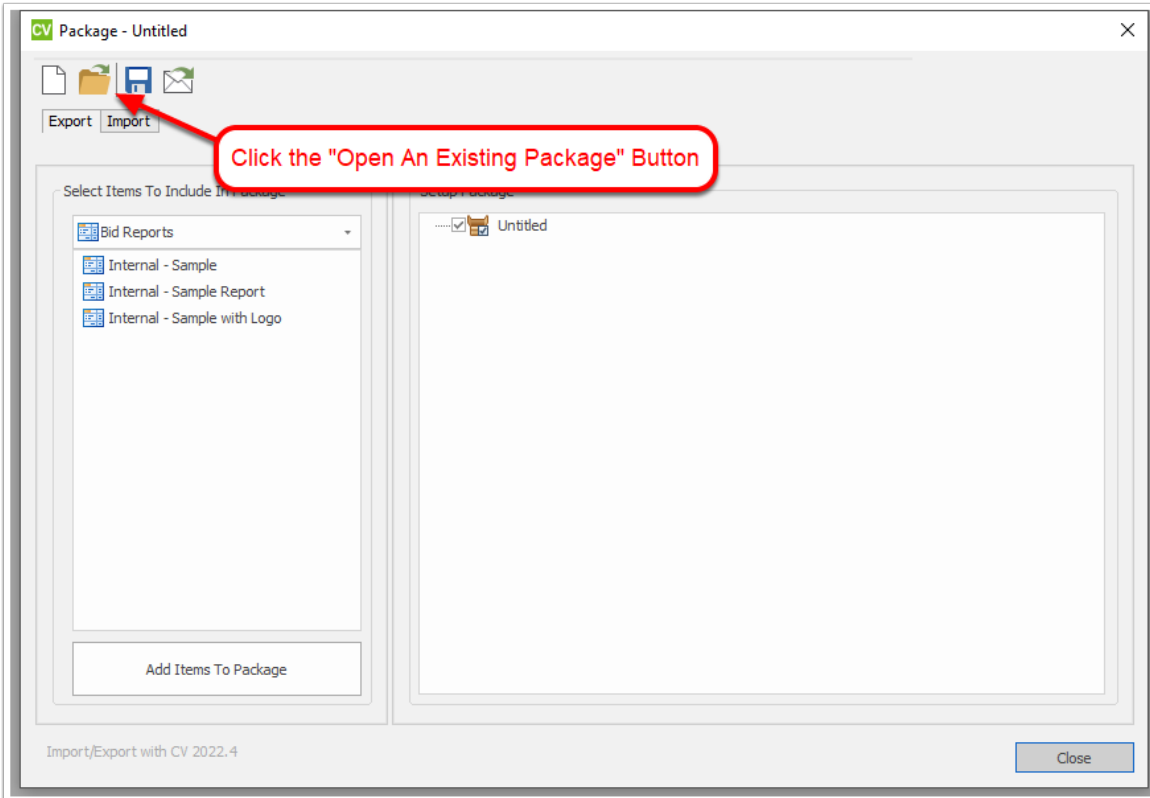
At the Cabinet Vision splash screen, click the Utilities menu and then select 'Setup Package'.



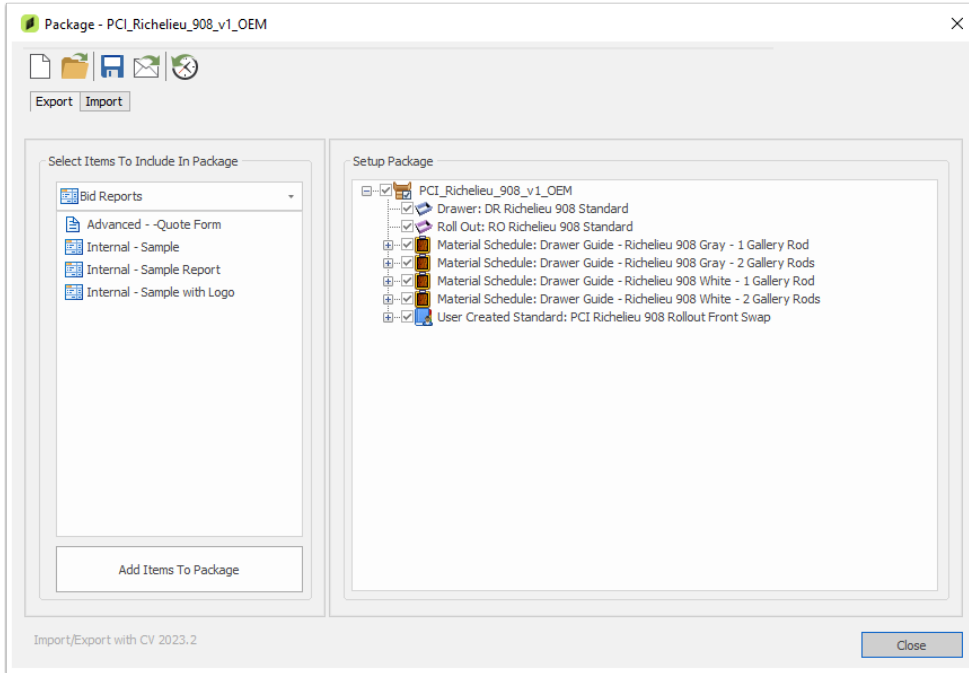
The 'Package' utility should then appear on your screen:



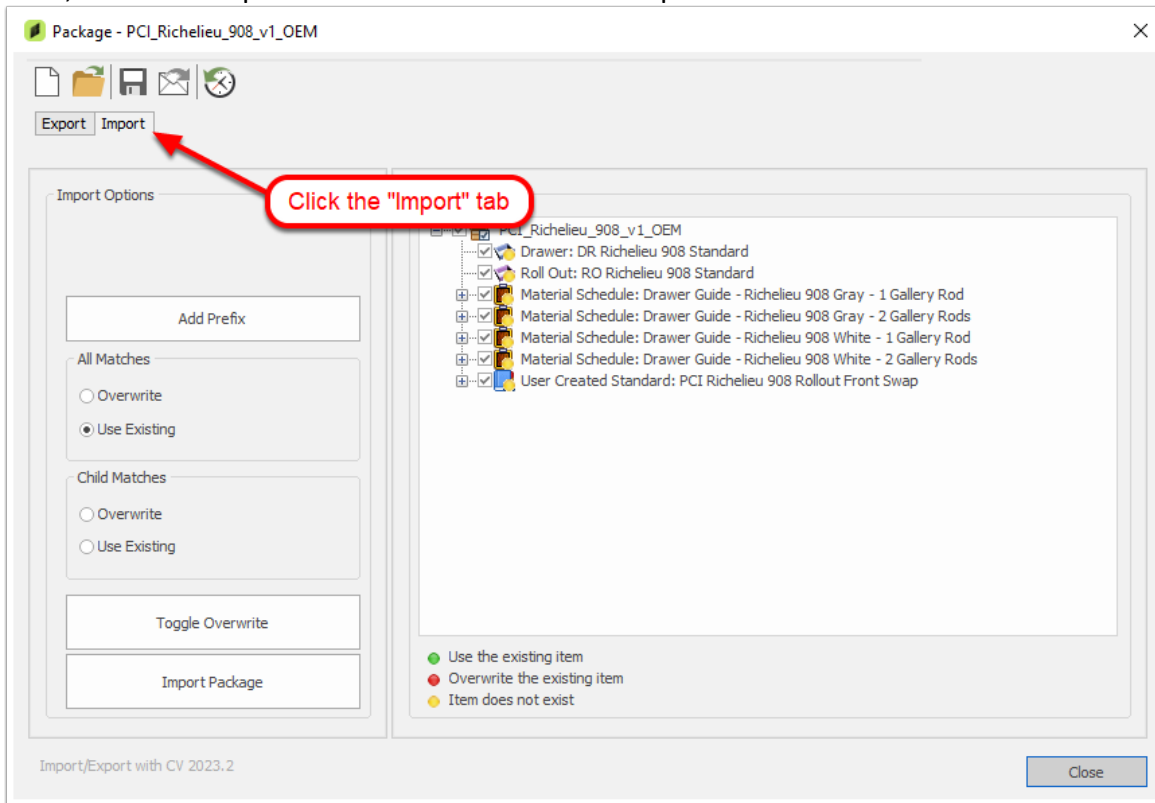
Click on the 'Open An Existing Package' button and the Open Package screen will appear. Locate the Richelieu 908 Package your previously downloaded, select it and then click Open



The Package window should now display the contents of the Richelieu 908 package and should look like this:



Next, click the “Import Mode” tab to switch to “Import mode”.



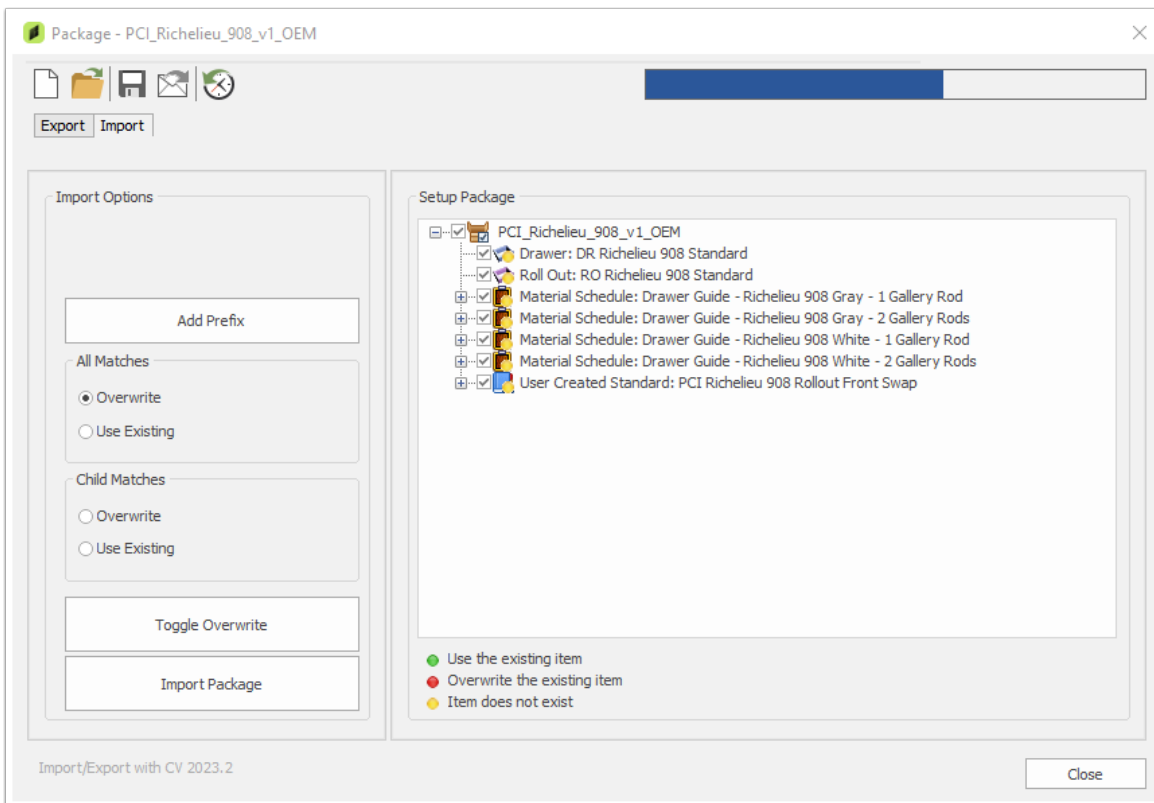
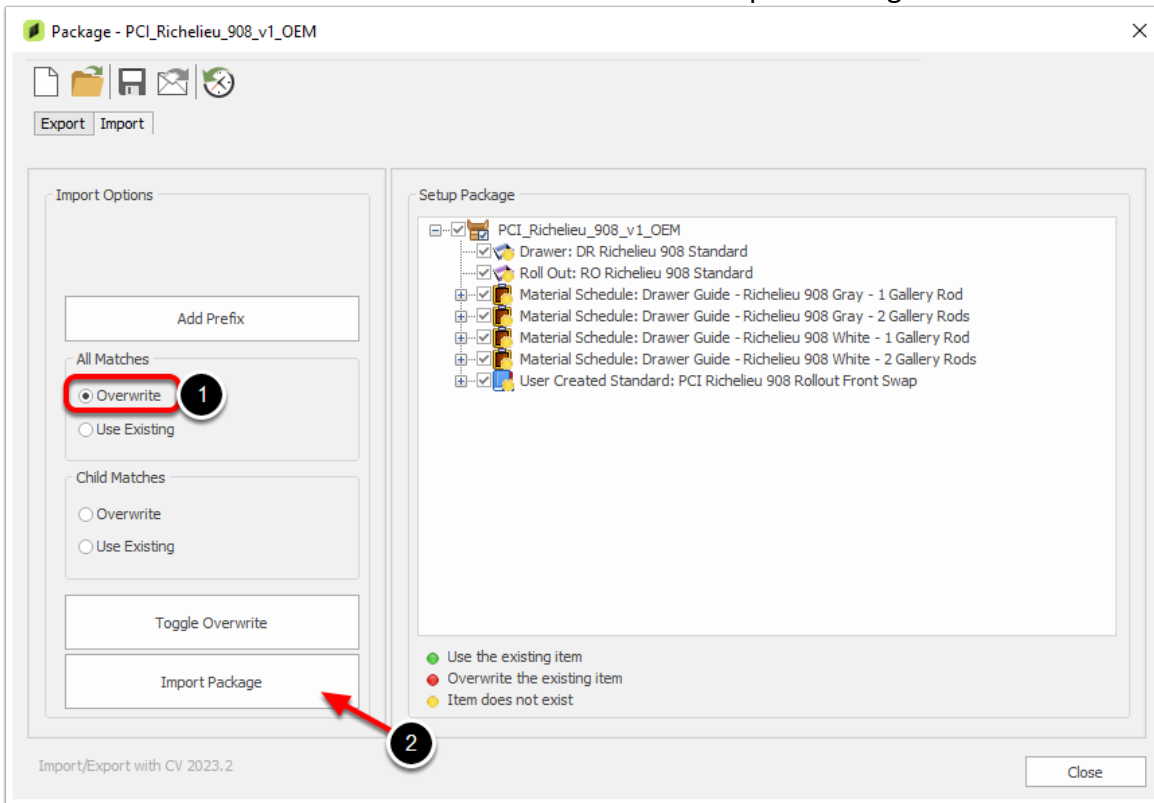
Please note the following details:

- Unless otherwise specified it is recommended that this checkbox be checked for each item when importing this package.

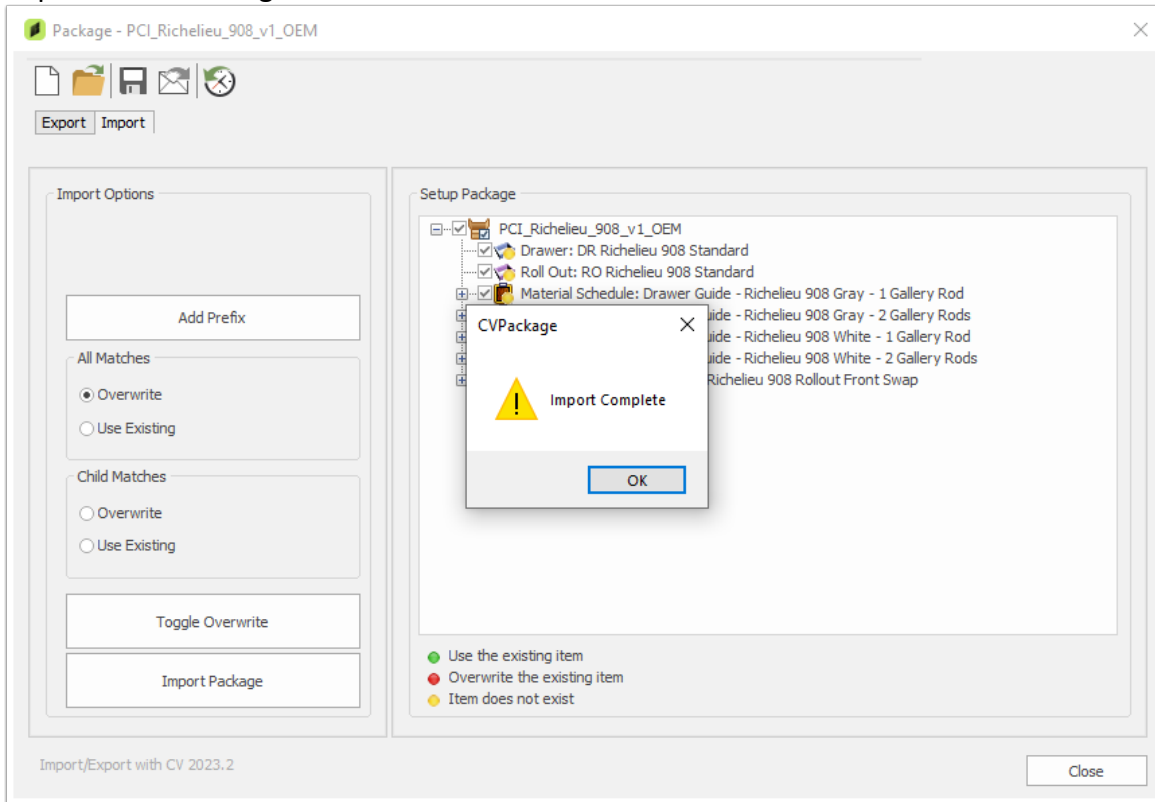
The icons listed below will help you indicate whether the items in your package currently exist in your CV or not. You can use the “Import Options” in the above screen to determine whether you would like to overwrite or use existing materials.

- Use the existing item
- Overwrite the existing item
- Item does not exist

Once the above information is selected then click the “Import Package” button.



Once the package is imported you will be informed that you have successfully imported the Package into Cabinet Vision.

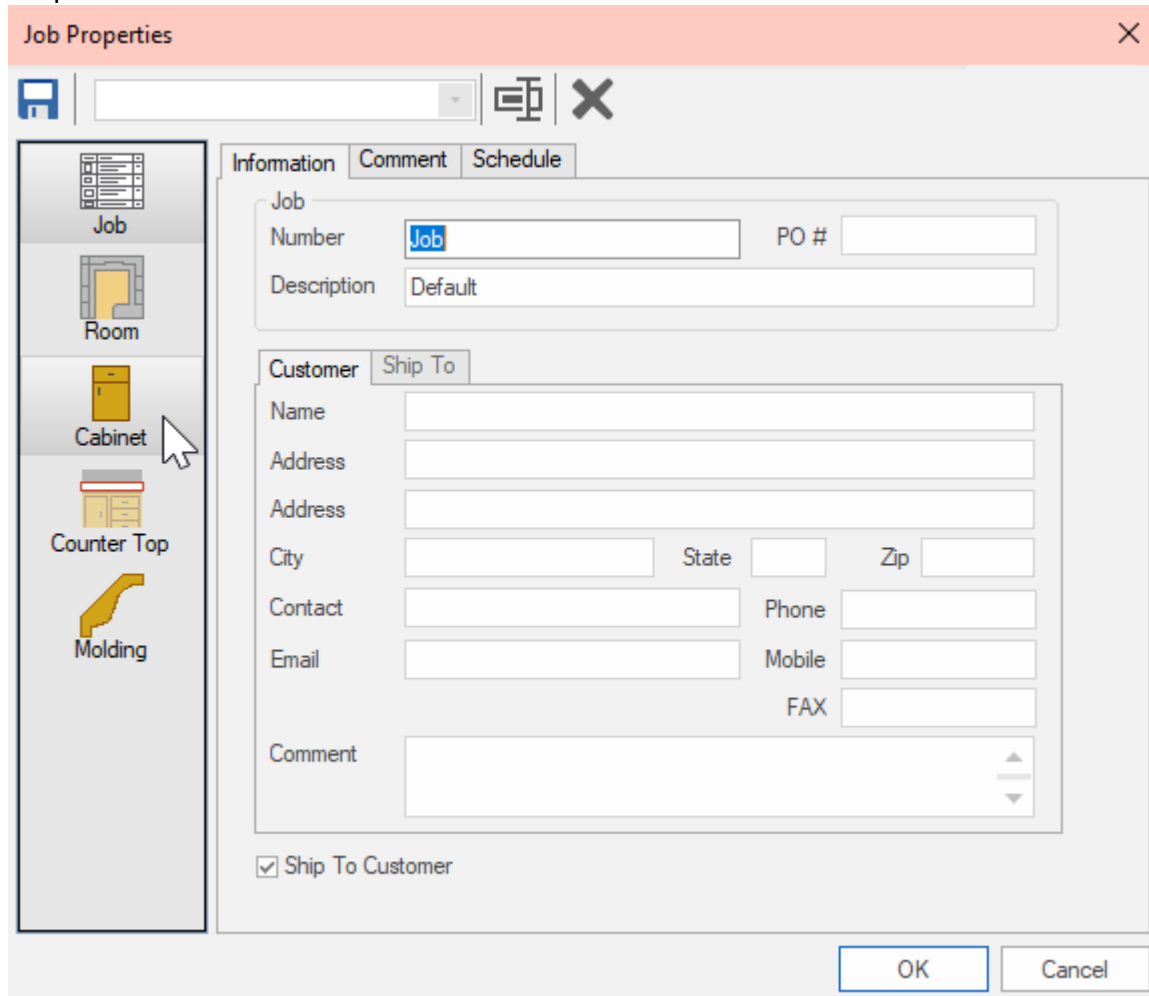


## Using the Richelieu 908 Package

Once this package has been imported you can begin using this package in Cabinet Vision.

### New Jobs

When starting a new job, the components making up this package can be selected under Cabinet Properties.



**Job Properties** [X]

Job  
Number:  PO #:   
Description:

Customer | Ship To

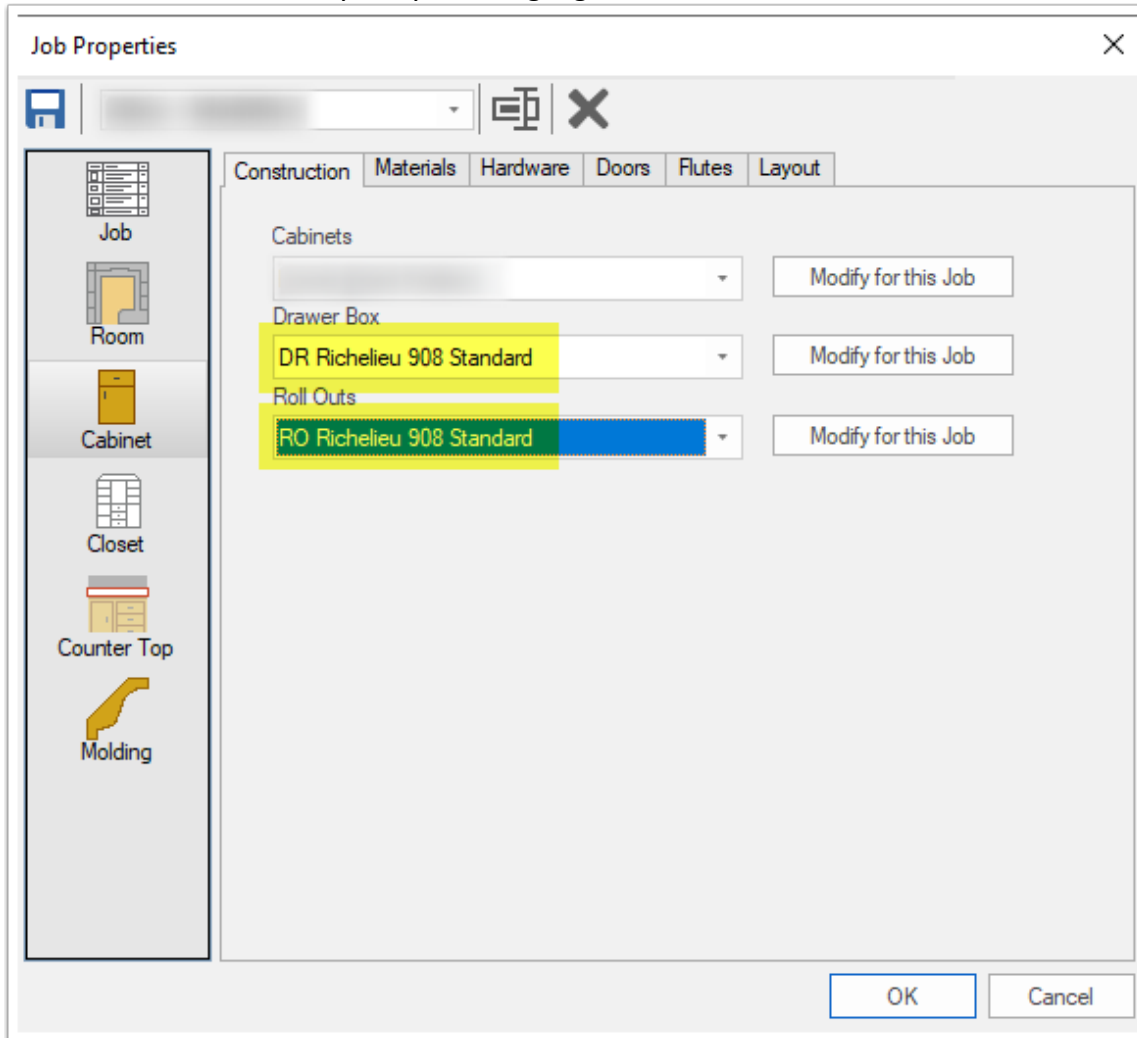
Name:   
Address:   
Address:   
City:  State:  Zip:   
Contact:  Phone:   
Email:  Mobile:   
FAX:   
Comment:

Ship To Customer

OK Cancel

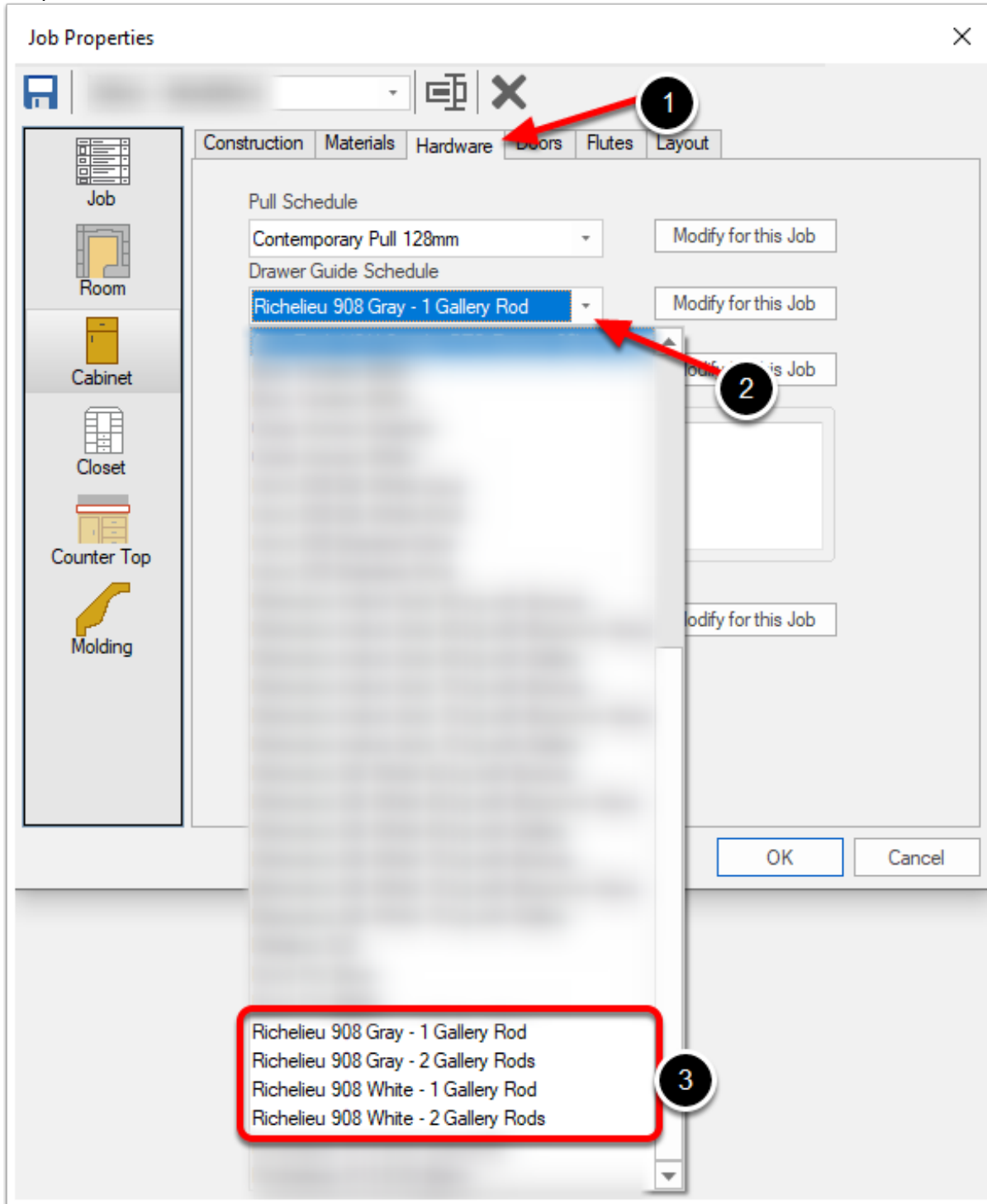
## Construction Tab Selections

To use the Richelieu 908 Package for Drawer Boxes and Roll-Out Boxes you must select the Richelieu 908 Drawer Construction Method and the Richelieu 908 Roll-Out Method from the Construction tab. Note the item indicated by the yellow highlight.



## Hardware Tab Selections

Select the correct Richelieu 908 Drawer Guide Schedule from the Hardware tab. Note the items indicated in the red rectangle from the drop-down menu.



## Existing Jobs

The Richelieu 908 Package can be used in existing jobs; however, it is important to note the following details:

### Update Job

In addition to making the appropriate Job or Room level selections indicated on the previous pages it may also be necessary to visit the Utilities tab within the Job and select Update Job with the following selections: Materials and Construction.

