

## Richelieu AXIAL Package for Cabinet Vision



## Table of Contents

Introduction .....	4
Installation Notes .....	5
Network Installation.....	5
General Notes .....	5
Importing the Richelieu AXIAL Package .....	6
How to import the Richelieu AXIAL Package in Cabinet Vision 2022 and Higher .....	6
Using the Richelieu AXIAL Package .....	13
New Jobs .....	13
Construction Tab Selections.....	14
Hardware Tab Selections .....	15
Existing Jobs .....	16
Update Job .....	16

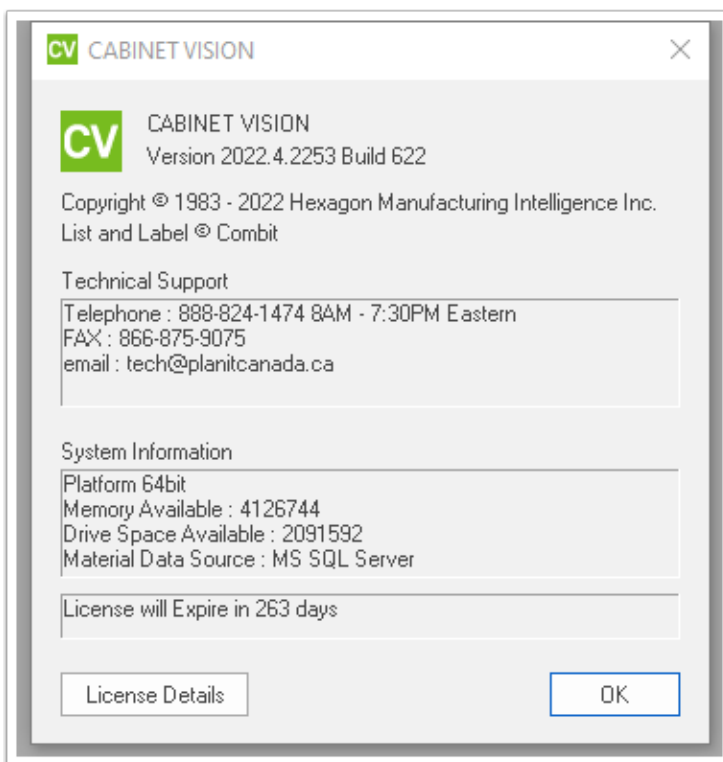
## Introduction

Thank you for downloading the Richelieu AXIAL Package. If you did not receive this package from the Planit Canada website (<https://planitcanada.ca/>) then the contents of this package may not be correct or functional. Only install Cabinet Vision Setup Packages from a trusted source.

This package is compatible only with Cabinet Vision version 2022.4 (or higher) and will not work with any previous versions.

If you require customization of this package or any of its contents, please contact Professional Services via [planitcanada.ca](https://planitcanada.ca) (<https://planitcanada.ca/training-support/request-support/>).

The following instructions will help you to import and use this package in Cabinet Vision. Thank you and enjoy!



## Installation Notes

- It is strongly recommended that you create a backup of your current database prior to importing this package. The Backup and Transferring Standards topics in the Cabinet Vision help file have more information on this.
- This package is NOT intended for versions prior to Cabinet Vision version 2022.4.

## Network Installation

If installing this package on a network which includes a Network Installation of Cabinet Vision, then please follow these steps:

- The package is best installed at the server. \*
- All users must be logged out of Cabinet Vision. See the Status Tab of the Network Administrator to Lock Out All Users.
- After the package has been installed, run Update Version and Unlock Users.

\* If the server is unavailable then the package can be installed at a workstation, but the rest of the steps must be followed.

## General Notes

- This package was created using metric standards and can be used in either metric or inches.
- Values used in this package can be changed to reflect the sizes used in your shop.
- Please report any problems with this package to the Planit Canada Tech Support Team.
- Newer or updated versions of this package can be found at the Cabinet Vision Packages page: (<https://planitcanada.ca/solutions/cabinet-vision/tools-packages/>)
- The contents of this package can be freely modified to suit your needs, however if it fails to function correctly after modification then you can resolve this by doing one of the following:
  - Re-import the original package and allow it to overwrite existing items.
  - Contact the Tech Support Team (<https://planitcanada.ca/training-support/request-support/>)

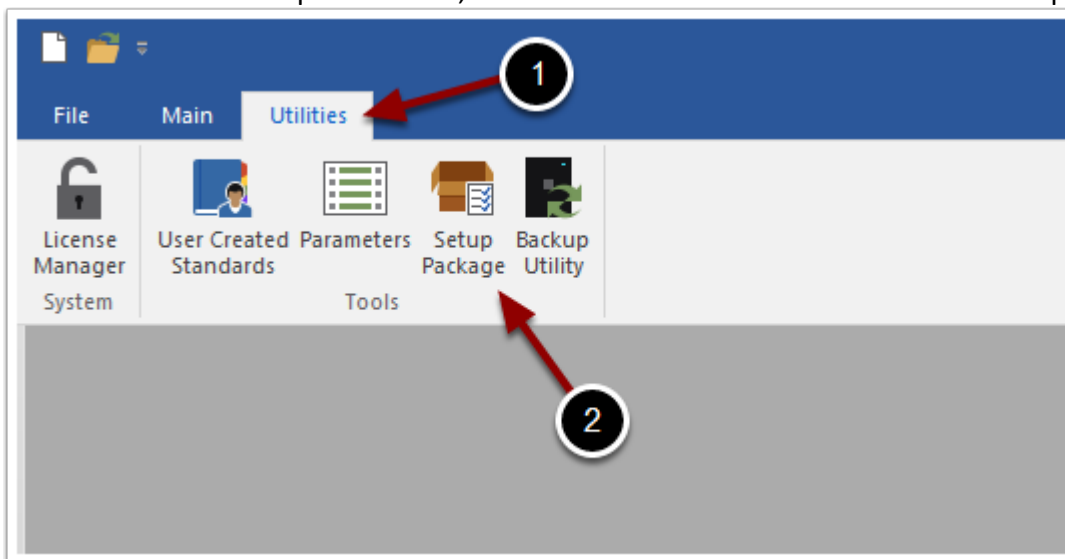
## Importing the Richelieu AXIAL Package

This package contains the following items:

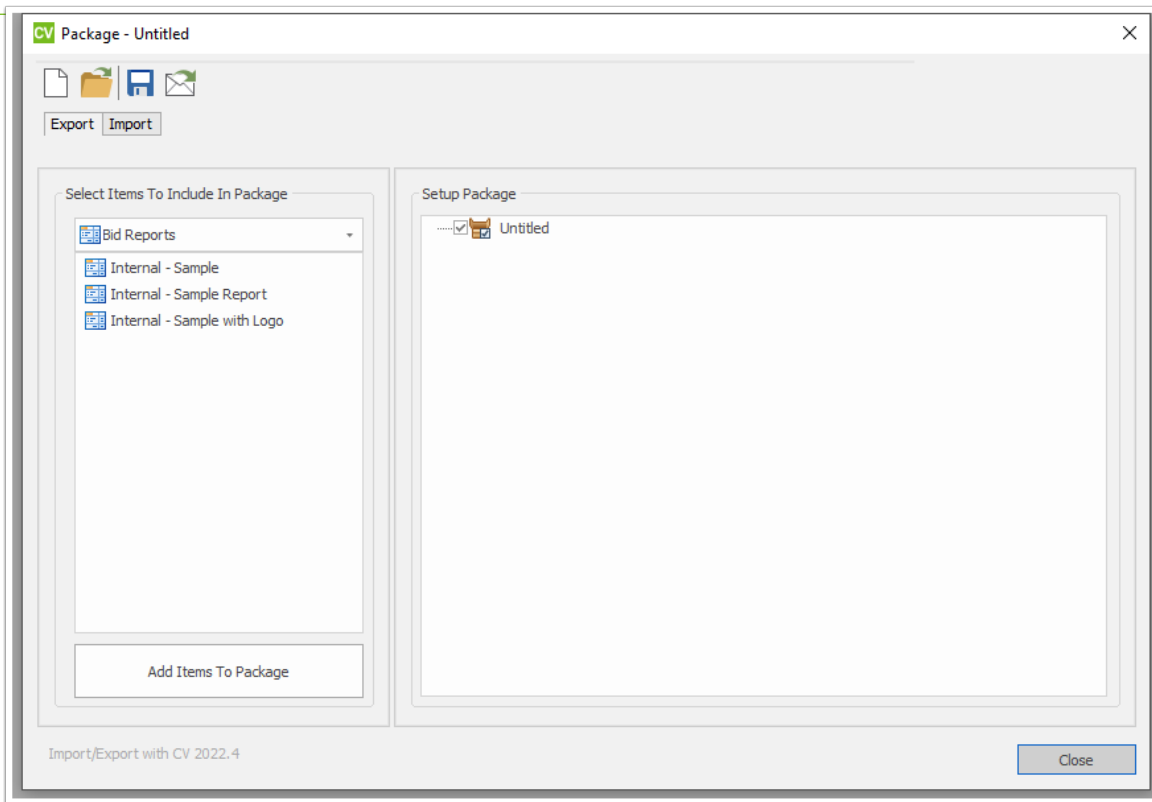
- One Drawer Box Construction and One Roll-Out Box Construction
  - DR Richelieu AXIAL (Drawer Box Construction)
  - RO Richelieu AXIAL (Roll-Out Box Construction)
- Two Drawer Guide Material Schedules
  - Richelieu AXIAL White
  - Richelieu AXIAL White w/Gallery Rail
- One User Created Standard (PCI Richelieu AXIAL Rollout Front Swap)

## How to import the Richelieu AXIAL Package in Cabinet Vision 2022 and Higher

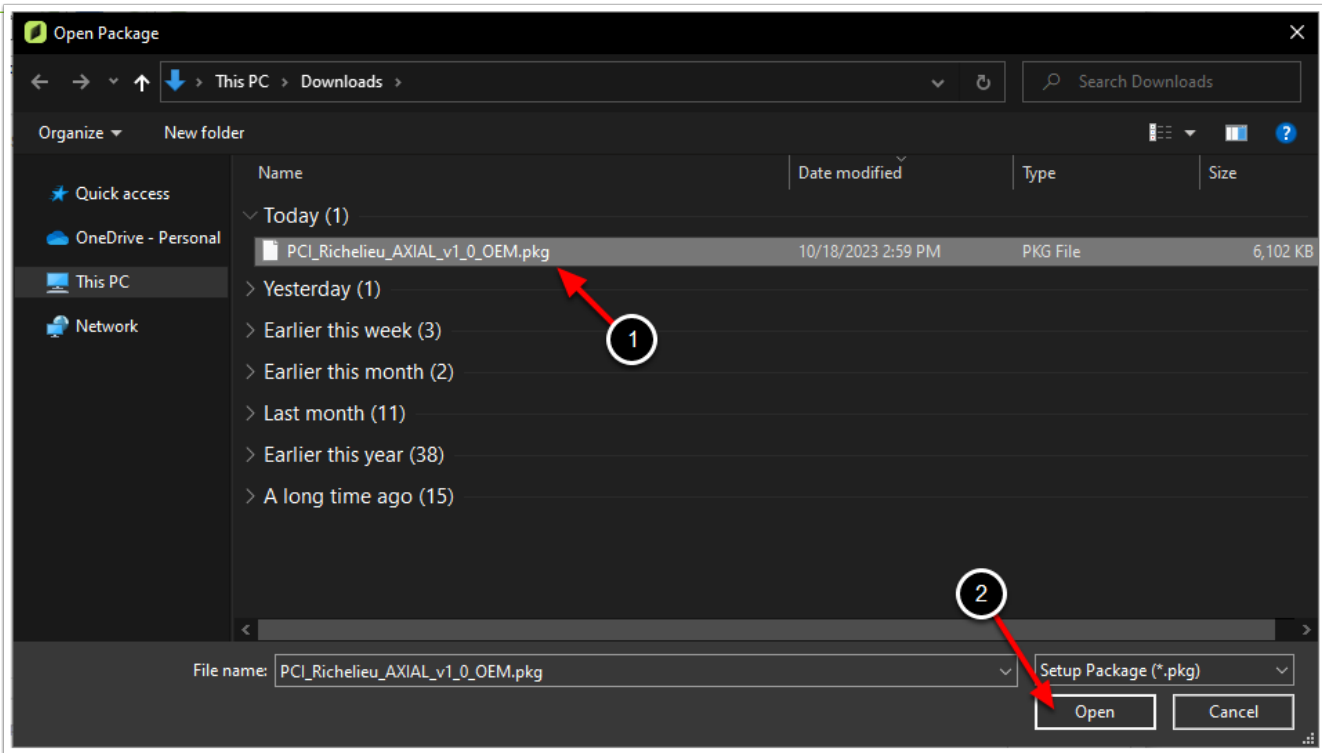
At the Cabinet Vision splash screen, click the Utilities menu and then select 'Setup Package'.



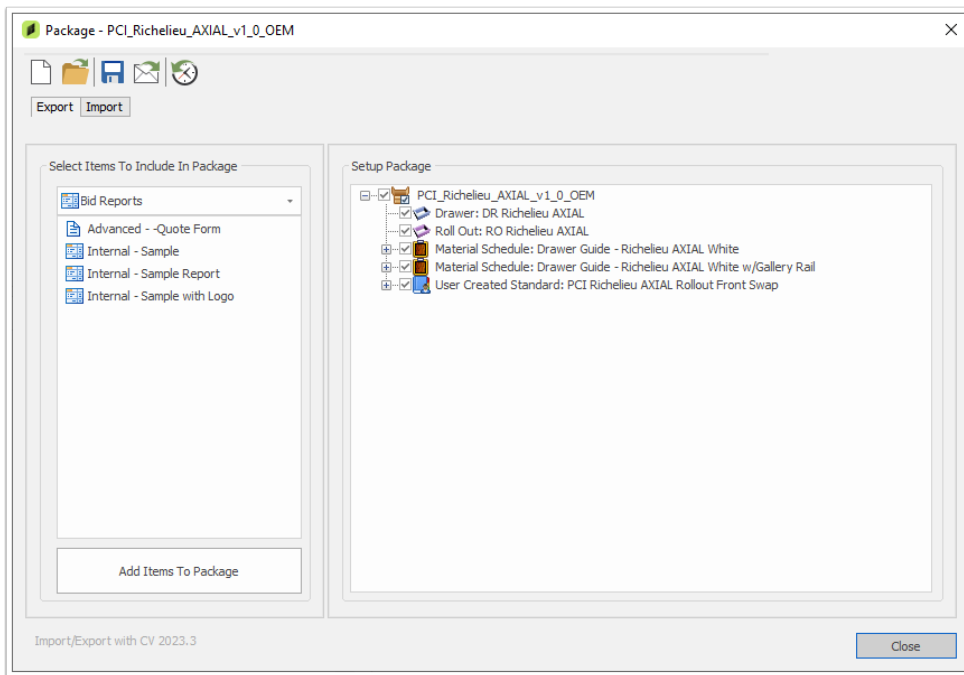
The 'Package' utility should then appear on your screen:



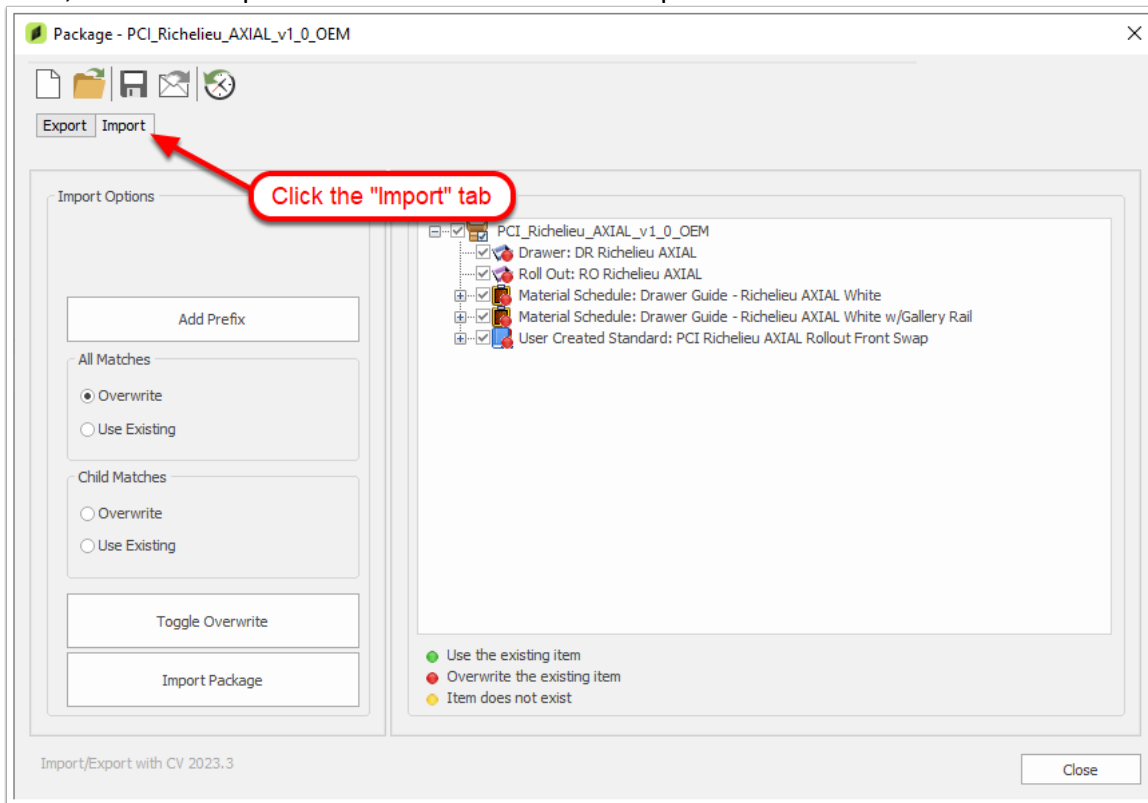
Click on the 'Open An Existing Package' button and the Open Package screen will appear. Locate the Richelieu AXIAL Package your previously downloaded, select it and then click Open



The Package window should now display the contents of the Richelieu AXIAL package and should look like this:



Next, click the “Import Mode” tab to switch to “Import mode”.



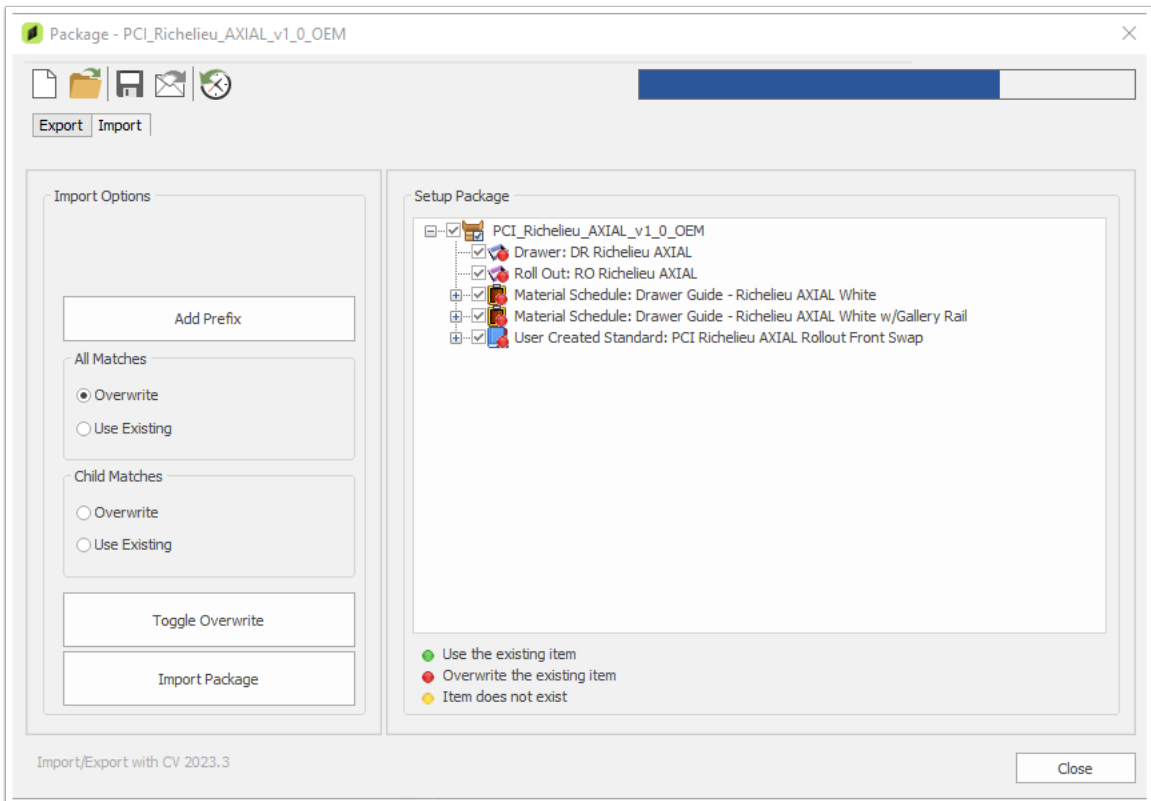
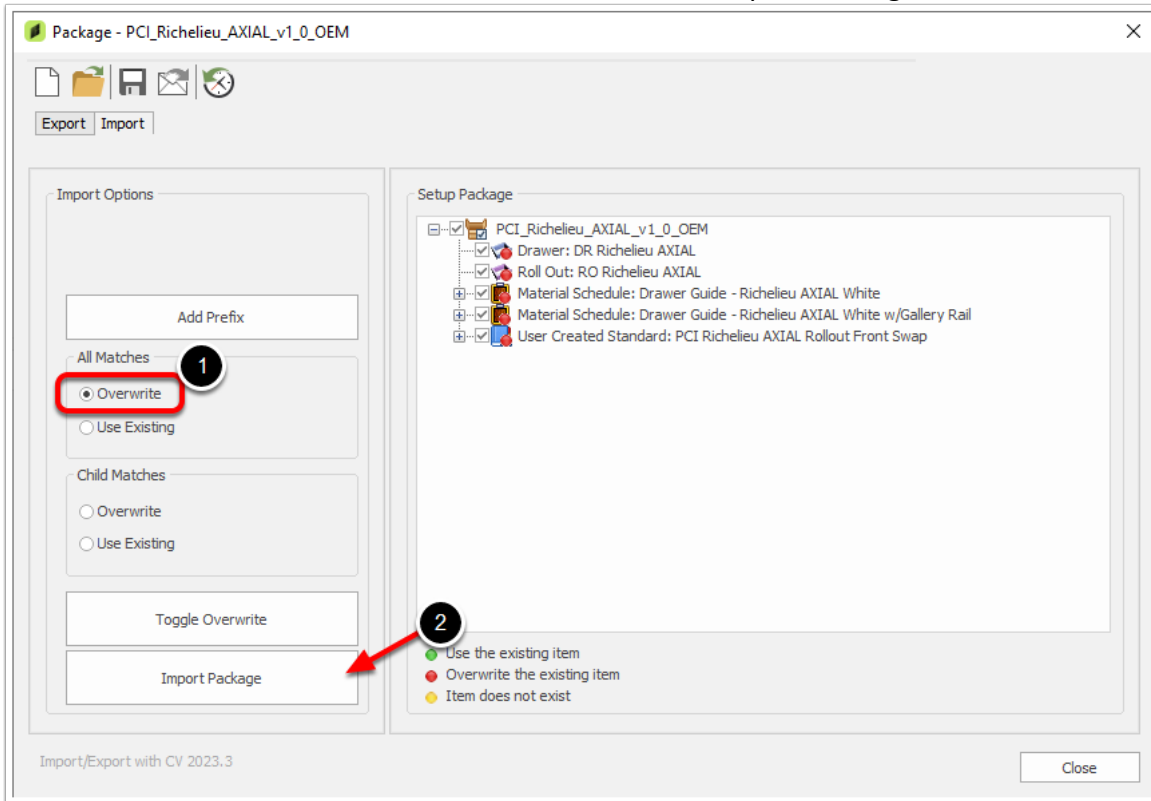
Please note the following details:

Unless otherwise specified it is recommended that this checkbox be checked for each item when importing this package.

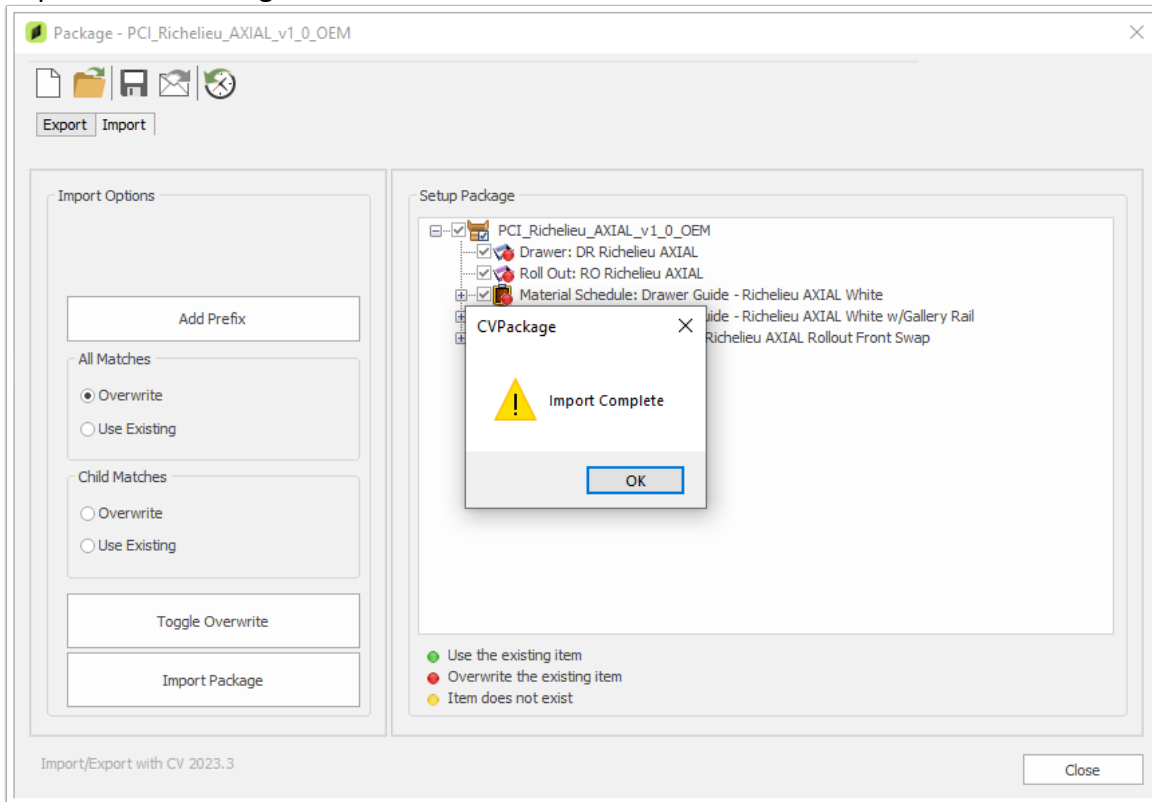
The icons listed below will help you indicate whether the items in your package currently exist in your CV or not. You can use the “Import Options” in the above screen to determine whether you would like to overwrite or use existing materials.

- Use the existing item
- Overwrite the existing item
- Item does not exist

Once the above information is selected then click the “Import Package” button.



Once the package is imported you will be informed that you have successfully imported the Package into Cabinet Vision.

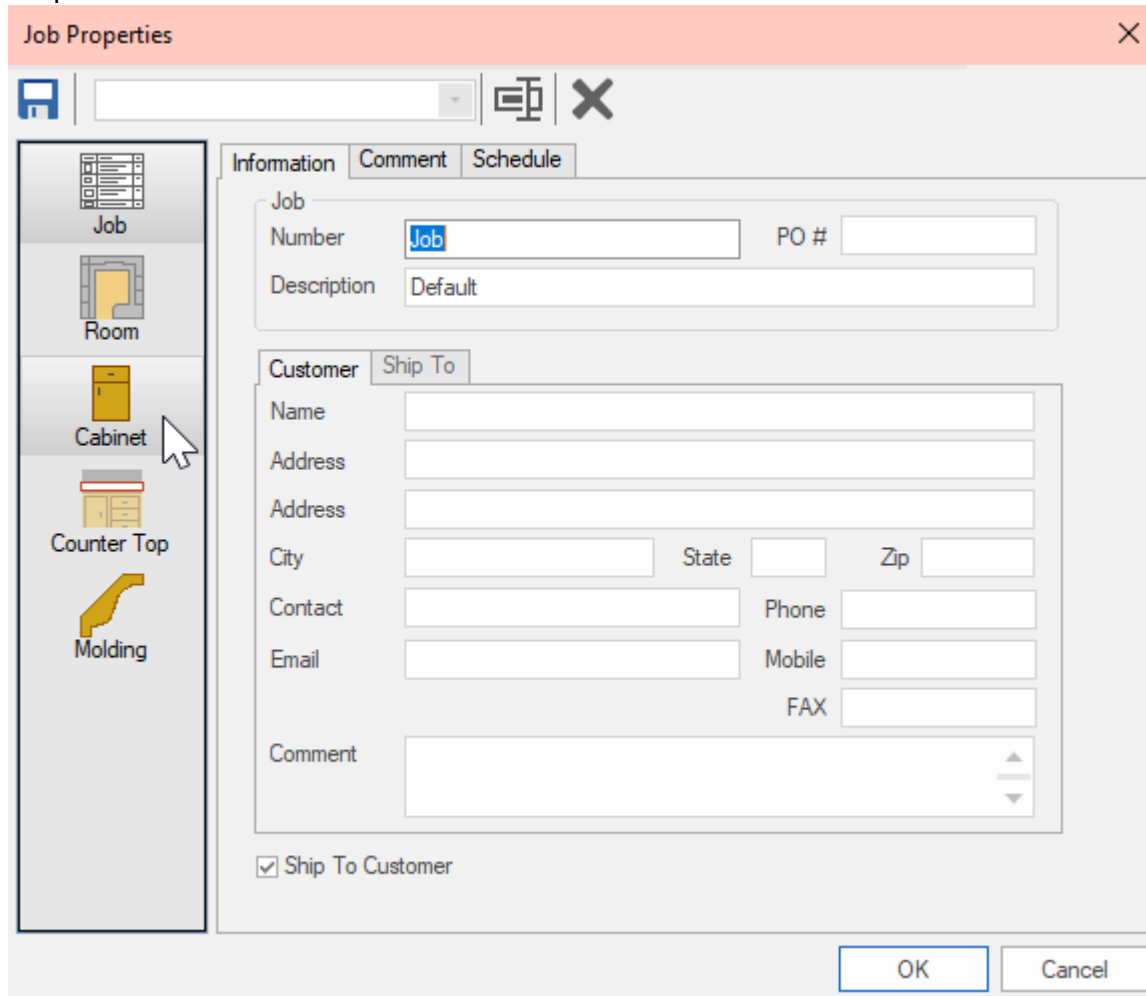


## Using the Richelieu AXIAL Package

Once this package has been imported you can begin using this package in Cabinet Vision.

### New Jobs

When starting a new job, the components making up this package can be selected under Cabinet Properties.



**Job Properties**

Information | Comment | Schedule

Job  
Number: Job PO #  
Description: Default

Customer | Ship To

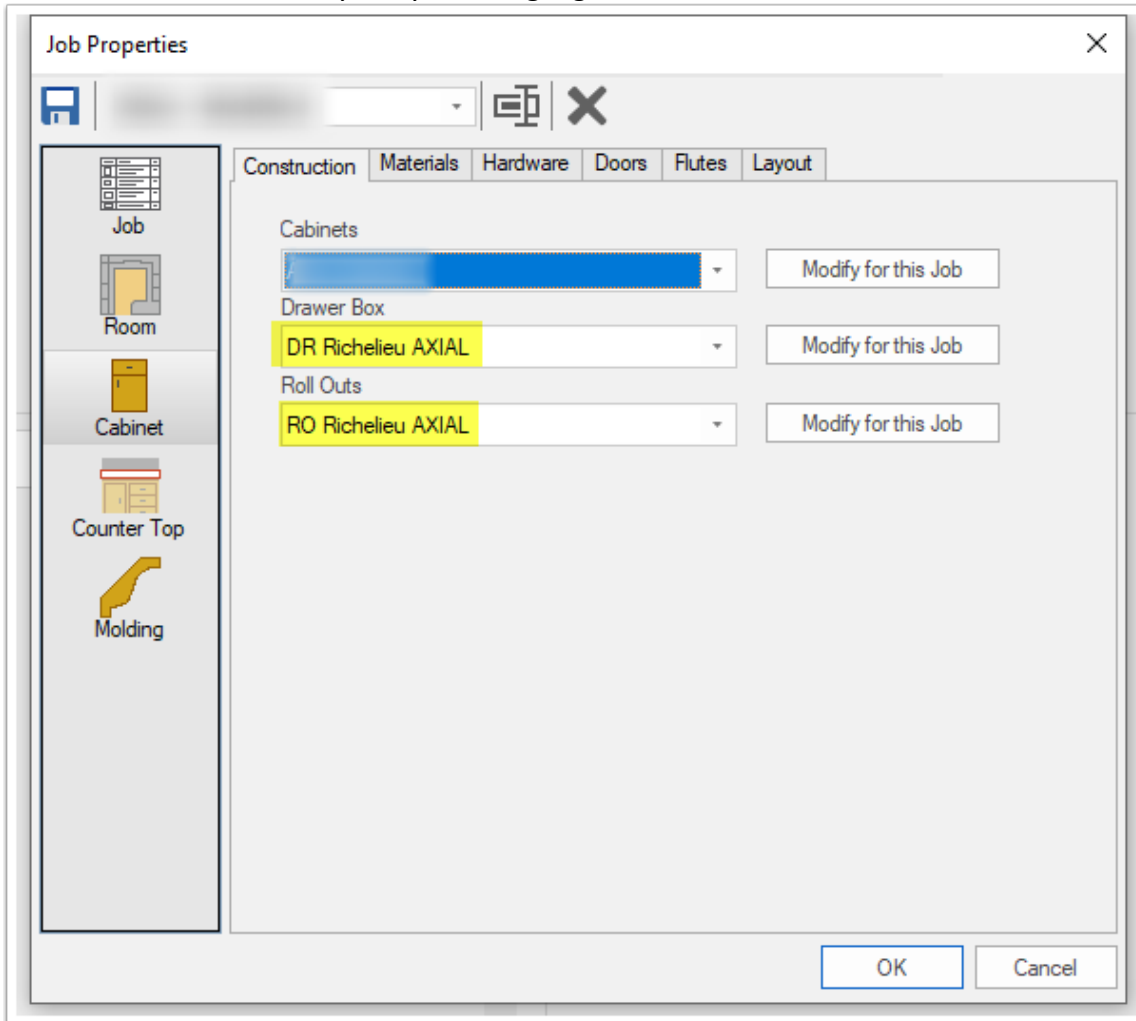
Name  
Address  
Address  
City State Zip  
Contact Phone  
Email Mobile  
FAX  
Comment

Ship To Customer

OK Cancel

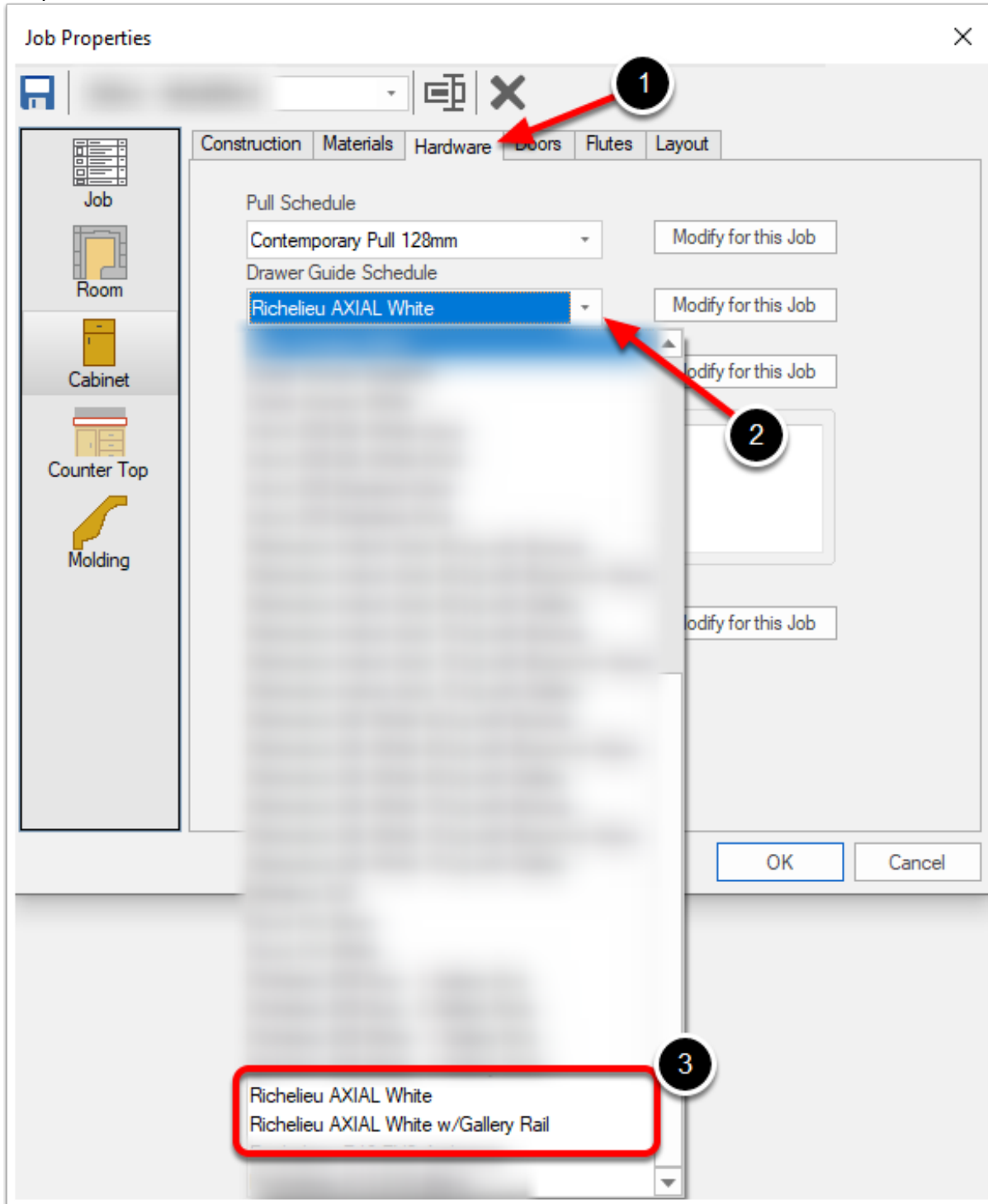
## Construction Tab Selections

To use the Richelieu AXIAL Package for Drawer Boxes and Roll-Out Boxes you must select the Richelieu AXIAL Drawer Construction Method and the Richelieu AXIAL Roll-Out Method from the Construction tab. Note the item indicated by the yellow highlight.



## Hardware Tab Selections

Select the correct Richelieu AXIAL Drawer Guide Schedule from the Hardware tab. Note the items indicated in the red rectangle from the drop-down menu.



## Existing Jobs

The Richelieu AXIAL Package can be used in existing jobs; however, it is important to note the following details:

### Update Job

In addition to making the appropriate Job or Room level selections indicated on the previous pages it may also be necessary to visit the Utilities tab within the Job and select Update Job with the following selections: Materials and Construction.

